



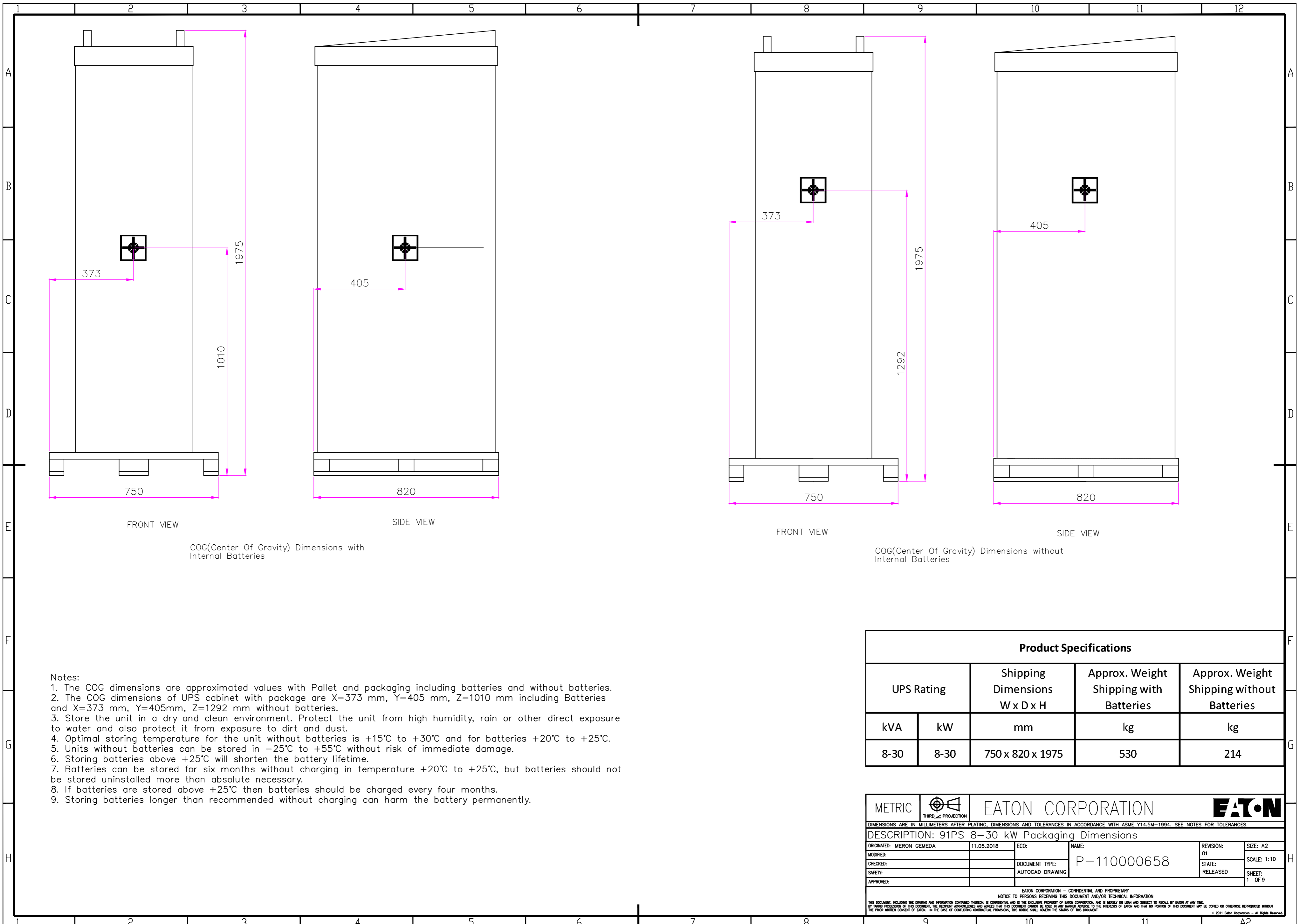
Powering Business Worldwide

SITE PLANNING DATA 91PS 8-30 kW

Page 1	Packaging Dimensions
Page 2	Dimensional Drawings
Page 3	COG(Center Of Gravity) and Clearance Dimensions
Page 4	Customer Connections
Page 5	Electrical Wiring of Single Unit Common Battery
Page 6	Electrical Wiring of Single Unit Separate Battery
Page 7	Electrical & Signal Wiring of Parallel Units Common Battery
Page 8	Electrical & Signal Wiring of Parallel Units Separate Battery
Page 9	Product Specifications



METRIC		THIRD ANGLE PROJECTION		EATON CORPORATION			
DIMENSIONS ARE IN MILLIMETERS AFTER PLATING, DIMENSIONS AND TOLERANCES IN ACCORDANCE WITH ASME Y14.5M-1994. SEE NOTES FOR TOLERANCES.							
DESCRIPTION: 91PS 8-30 kW							
ORIGINATED: MERON GEMEDA	11.05.2018	ECD:	NAME:	REVISION: 01	SIZE: A2		
MODIFIED:				STATE: RELEASED	SCALE: N/A		
CHECKED:		DOCUMENT TYPE:	P-110000658				
SAFETY:		AUTOCAD DRAWING			SHEET: OF N/A		
APPROVED:							
EATON CORPORATION - CONFIDENTIAL AND PROPRIETARY							
NOTICE TO PERSONS RECEIVING THIS DOCUMENT AND/OR TECHNICAL INFORMATION							
THIS DOCUMENT, INCLUDING THE DRAWING AND INFORMATION CONTAINED THEREON, IS CONFIDENTIAL AND IS THE EXCLUSIVE PROPERTY OF EATON CORPORATION, AND IS LOANED AND SUBJECT TO RECALL BY EATON AT ANY TIME. BY TAKING POSSESSION OF THIS DOCUMENT, THE RECIPIENT ACKNOWLEDGES AND AGREES THAT THIS DOCUMENT CANNOT BE USED IN ANY MANNER UNLESS TO THE INTERESTS OF EATON AND THAT NO PORTION OF THIS DOCUMENT MAY BE COPIED OR OTHERWISE REPRODUCED WITHOUT THE PRIOR WRITTEN CONSENT OF EATON. IN THE CASE OF CONFLICTING CONTRACTUAL PROVISIONS, THIS NOTICE SHALL GOVERN THE STATUS OF THIS DOCUMENT.							
© 2011 Eaton Corporation - All Rights Reserved.							



FRONT VIEW

SIDE VIEW

COG(Center Of Gravity) Dimensions with Internal Batteries

FRONT VIEW

SIDE VIEW

COG(Center Of Gravity) Dimensions without Internal Batteries

Notes:

1. The COG dimensions are approximated values with Pallet and packaging including batteries and without batteries.
2. The COG dimensions of UPS cabinet with package are X=373 mm, Y=405 mm, Z=1010 mm including Batteries and X=373 mm, Y=405mm, Z=1292 mm without batteries.
3. Store the unit in a dry and clean environment. Protect the unit from high humidity, rain or other direct exposure to water and also protect it from exposure to dirt and dust.
4. Optimal storing temperature for the unit without batteries is +15°C to +30°C and for batteries +20°C to +25°C.
5. Units without batteries can be stored in -25°C to +55°C without risk of immediate damage.
6. Storing batteries above +25°C will shorten the battery lifetime.
7. Batteries can be stored for six months without charging in temperature +20°C to +25°C, but batteries should not be stored uninstalled more than absolute necessary.
8. If batteries are stored above +25°C then batteries should be charged every four months.
9. Storing batteries longer than recommended without charging can harm the battery permanently.

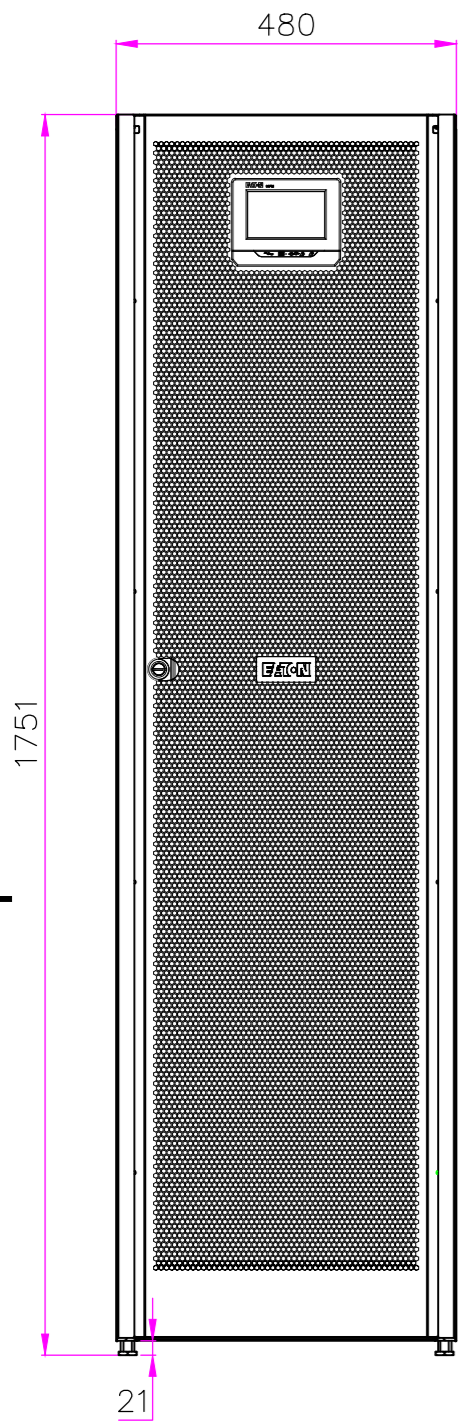
Product Specifications

UPS Rating		Shipping Dimensions W x D x H	Approx. Weight Shipping with Batteries	Approx. Weight Shipping without Batteries
kVA	kW	mm	kg	kg
8-30	8-30	750 x 820 x 1975	530	214

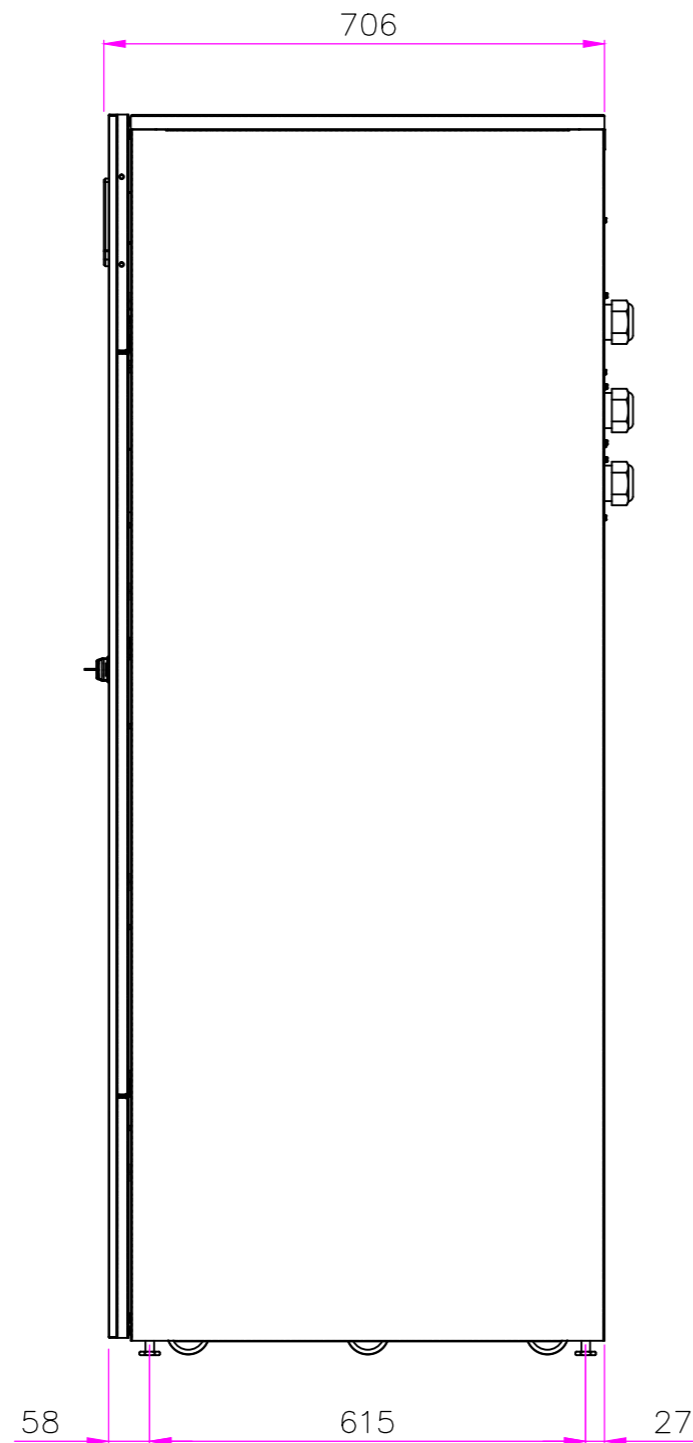
METRIC		THIRD ANGLE PROJECTION		EATON CORPORATION		EATON	
DIMENSIONS ARE IN MILLIMETERS AFTER PLATING, DIMENSIONS AND TOLERANCES IN ACCORDANCE WITH ASME Y14.5M-1994. SEE NOTES FOR TOLERANCES.							
DESCRIPTION: 91PS 8-30 kW Packaging Dimensions							
ORIGINATED: MERON GEMEDA	11.05.2018	ECO:	NAME:	REVISION: 01	SIZE: A2		
MODIFIED:		DOCUMENT TYPE:	P-110000658	SCALE: 1:10			
CHECKED:		AUTOCAD DRAWING		STATE: RELEASED	SHEET: 1	OF 9	
SAFETY:							
APPROVED:							

EATON CORPORATION - CONFIDENTIAL AND PROPRIETARY
 NOTICE TO PERSONS RECEIVING THIS DOCUMENT AND/OR TECHNICAL INFORMATION
 THIS DOCUMENT, INCLUDING THE DRAWING AND INFORMATION CONTAINED THEREON, IS CONFIDENTIAL AND IS THE EXCLUSIVE PROPERTY OF EATON CORPORATION AND IS LOANED AND SUBJECT TO RECALL BY EATON AT ANY TIME.
 BY YOUR POSSESSION OF THIS DOCUMENT, YOU ACKNOWLEDGE AND AGREE THAT THIS DOCUMENT CANNOT BE USED IN ANY MANNER UNLESS TO THE INTERESTS OF EATON AND THAT NO PORTION OF THIS DOCUMENT MAY BE COPIED OR OTHERWISE REPRODUCED WITHOUT THE PRIOR WRITTEN CONSENT OF EATON. IN THE CASE OF CONFLICTING CONTRACTUAL PROVISIONS, THIS NOTICE SHALL GOVERN THE STATUS OF THIS DOCUMENT.
 © 2011 Eaton Corporation - All Rights Reserved.

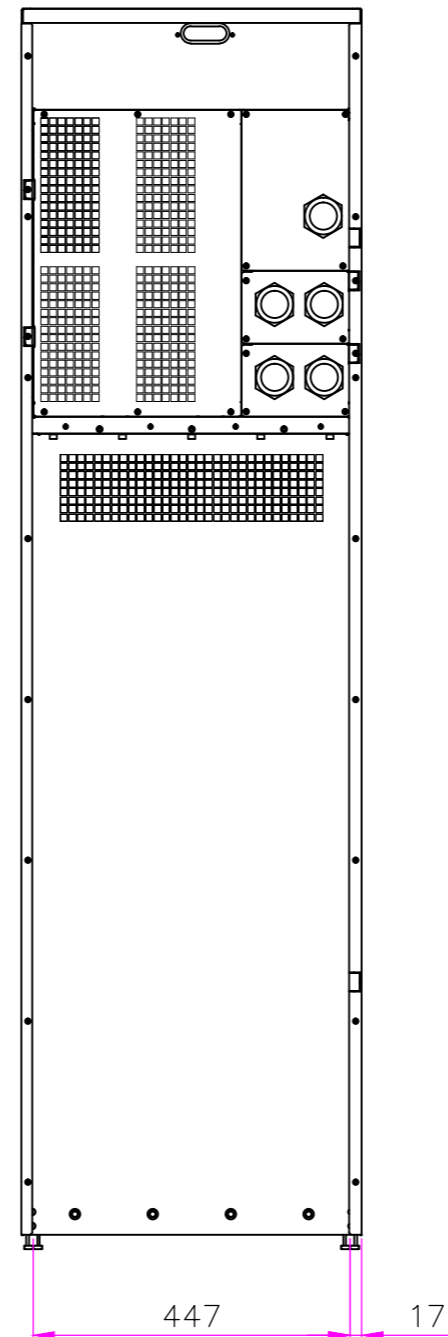
Product Specifications										
UPS Rating		Max Heat Dissipation at 100% Load	Cabinet Dimensions W x D x H	Shipping Dimensions W x D x H	Approx. Weight Cabinet with Batteries	Approx. Weight Cabinet without Batteries	Approx. Weight Shipping with Batteries	Approx. Weight Shipping without Batteries	Floor Landing	Min. air flow for internal batteries
kVA	kW	W	mm	mm	kg	kg	kg	kg	kg/m ²	m ³ /h
8	8	368	480 x 750 x 1750	750 x 820 x 1975	504	188	530	214	1478	3
10	10	460	480 x 750 x 1750	750 x 820 x 1975	504	188	530	214	1478	3
15	15	720	480 x 750 x 1750	750 x 820 x 1975	504	188	530	214	1478	3
30	30	1410	480 x 750 x 1750	750 x 820 x 1975	504	188	530	214	1478	3



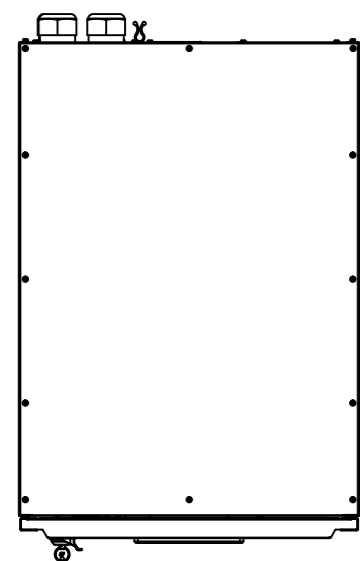
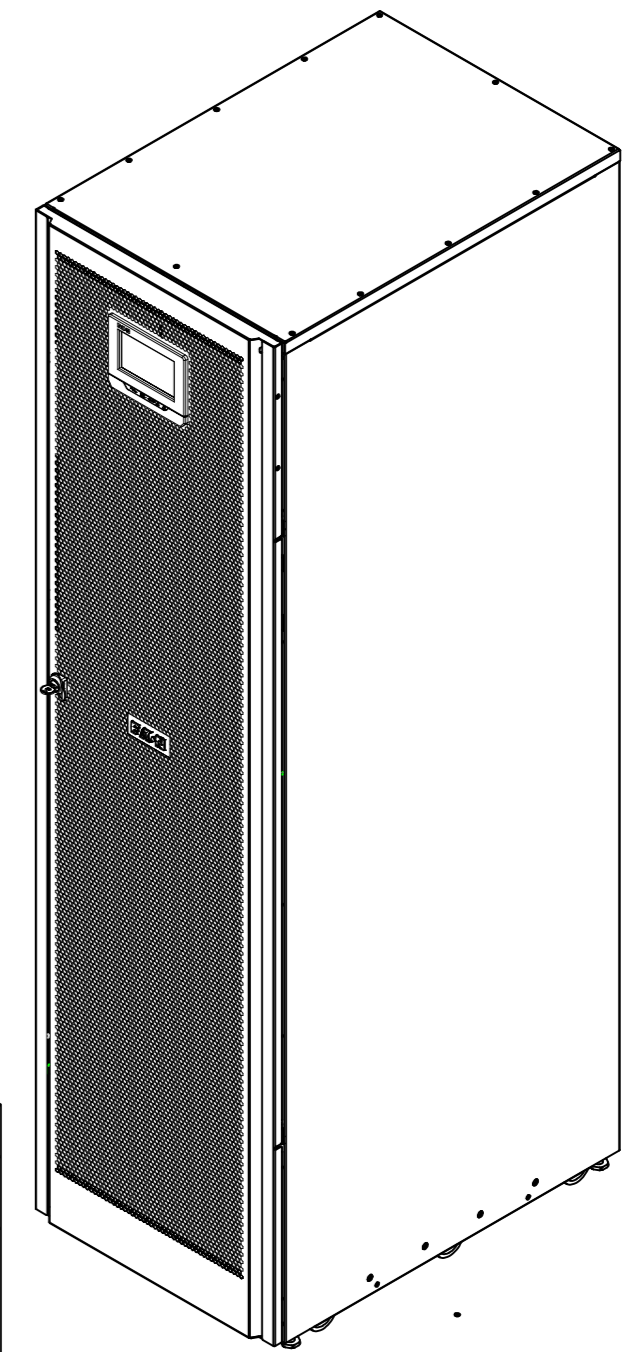
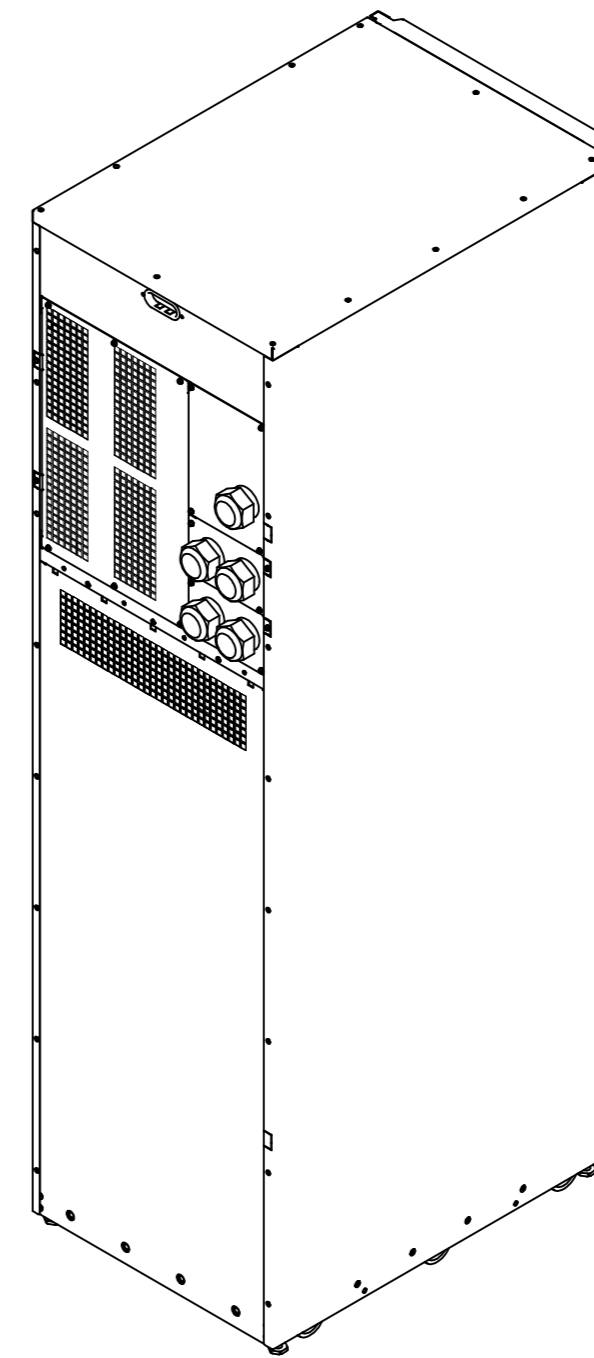
FRONT VIEW



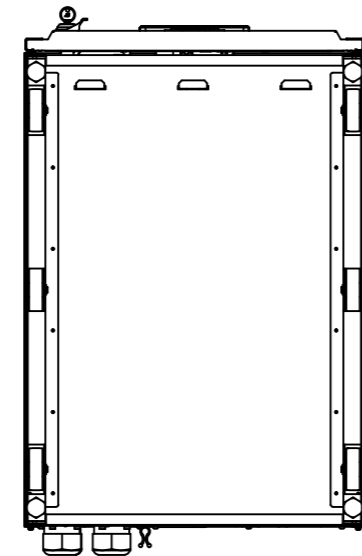
SIDE VIEW



REAR VIEW



TOP VIEW

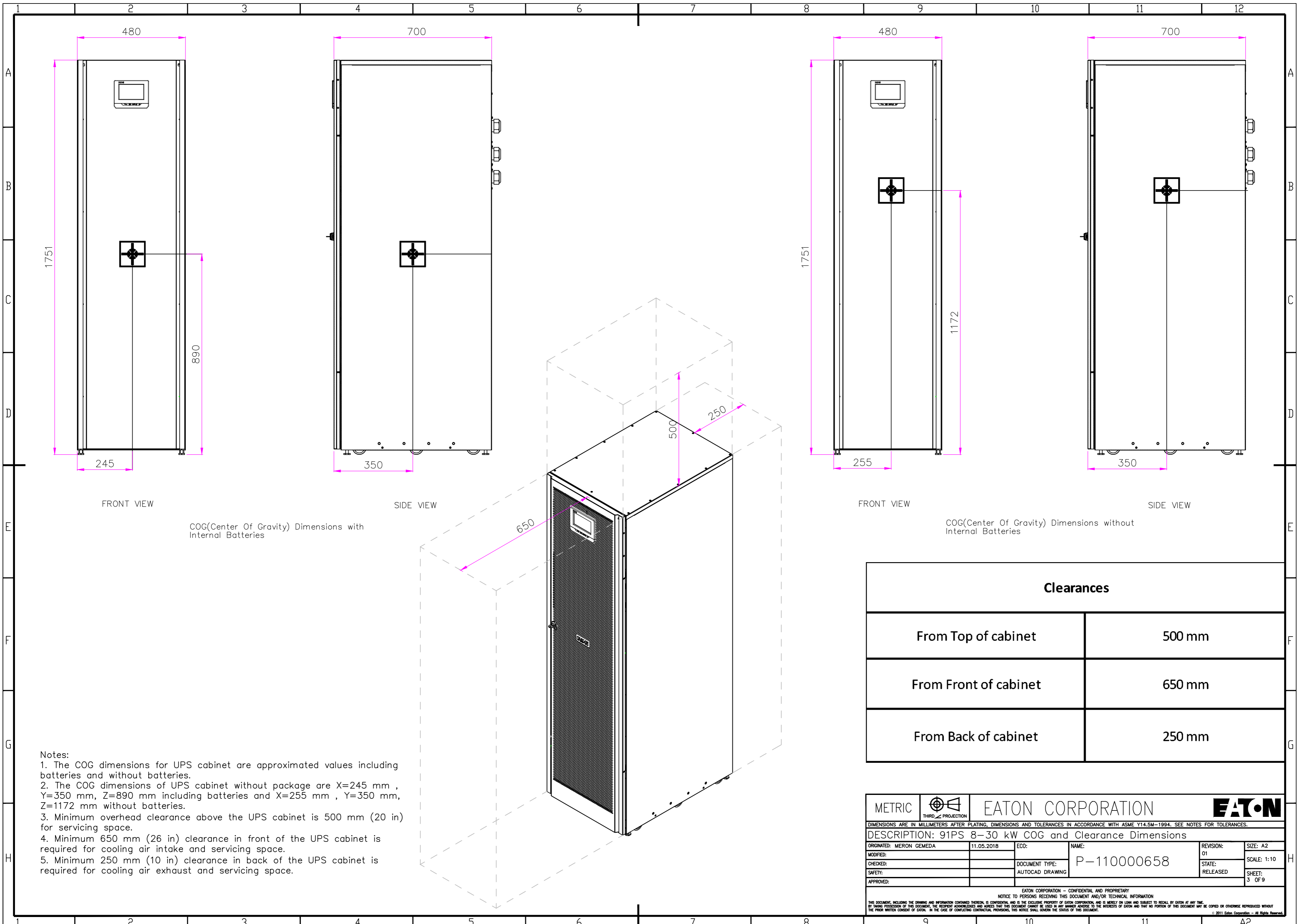


BOTTOM VIEW

Notes:

1. The system must be installed in a temperature and humidity controlled indoor area free of conductive contaminants.
2. Continuous ambient temperature range: 0–40°C (32–104°F); Maximum relative humidity: 95% non-condensing.
3. The UPS can be installed in line-up-and-match or standalone configurations.
4. The rear cable entries through the removable access gland plate are standard for all configurations. Access plates shall be custom-modified to suit conduit sizes.
5. Ensure the necessary minimum air flow rate of 3 m³/h for internal batteries to avoid explosive gas mixture that can be created if the hydrogen concentration exceeds 4% by volume in air.

METRIC		THIRD ANGLE PROJECTION		EATON CORPORATION			
DIMENSIONS ARE IN MILLIMETERS AFTER PLATING, DIMENSIONS AND TOLERANCES IN ACCORDANCE WITH ASME Y14.5M-1994. SEE NOTES FOR TOLERANCES.							
DESCRIPTION: 91PS 8–30 kW Dimensional Drawings							
ORIGINATED: MERON GEMDA	11.05.2018	ECC:	NAME:	REVISION: 01	SIZE: A2	SCALE: 1:10	
MODIFIED:		DOCUMENT TYPE:	P-110000658	STATE: RELEASED	SHEET: 2 OF 9		
CHECKED:		AUTOCAD DRAWING					
SAFETY:							
APPROVED:							
EATON CORPORATION – CONFIDENTIAL AND PROPRIETARY NOTICE TO PERSONS RECEIVING THIS DOCUMENT AND/OR TECHNICAL INFORMATION THIS DOCUMENT, INCLUDING THE DRAWING AND INFORMATION CONTAINED THEREON, IS CONFIDENTIAL AND IS THE EXCLUSIVE PROPERTY OF EATON CORPORATION AND IS LOANED TO YOU AND SUBJECT TO RECALL BY EATON AT ANY TIME. BY YOUR POSSESSION OF THIS DOCUMENT, YOU ACKNOWLEDGE AND AGREE THAT THIS DOCUMENT CANNOT BE USED IN ANY MANNER, AND THAT NO PORTION OF THIS DOCUMENT MAY BE COPIED OR OTHERWISE REPRODUCED WITHOUT THE PRIOR WRITTEN CONSENT OF EATON. IN THE CASE OF CONFLICTING CONTRACTUAL PROVISIONS, THIS NOTICE SHALL GOVERN THE STATUS OF THIS DOCUMENT. © 2011 Eaton Corporation – All Rights Reserved.							



FRONT VIEW

SIDE VIEW

FRONT VIEW

SIDE VIEW

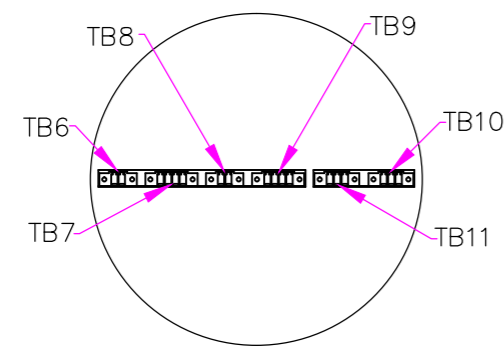
COG(Center Of Gravity) Dimensions with Internal Batteries

COG(Center Of Gravity) Dimensions without Internal Batteries

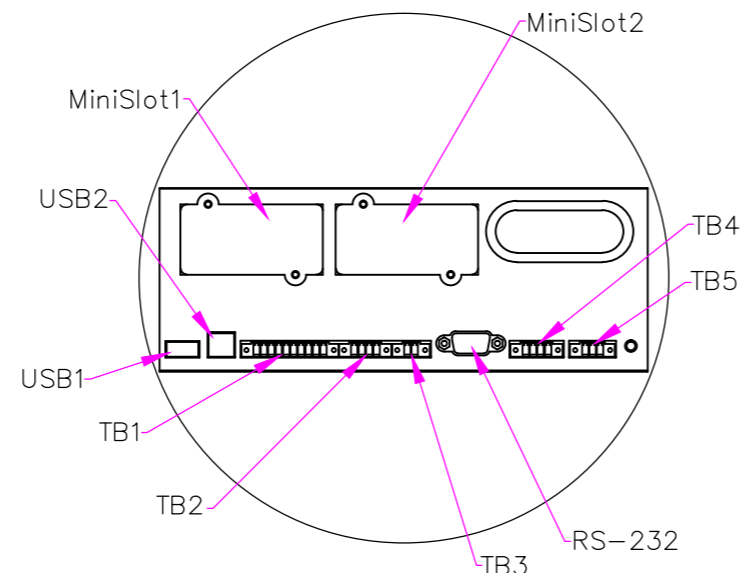
- Notes:
1. The COG dimensions for UPS cabinet are approximated values including batteries and without batteries.
 2. The COG dimensions of UPS cabinet without package are X=245 mm , Y=350 mm, Z=890 mm including batteries and X=255 mm , Y=350 mm, Z=1172 mm without batteries.
 3. Minimum overhead clearance above the UPS cabinet is 500 mm (20 in) for servicing space.
 4. Minimum 650 mm (26 in) clearance in front of the UPS cabinet is required for cooling air intake and servicing space.
 5. Minimum 250 mm (10 in) clearance in back of the UPS cabinet is required for cooling air exhaust and servicing space.

Clearances	
From Top of cabinet	500 mm
From Front of cabinet	650 mm
From Back of cabinet	250 mm

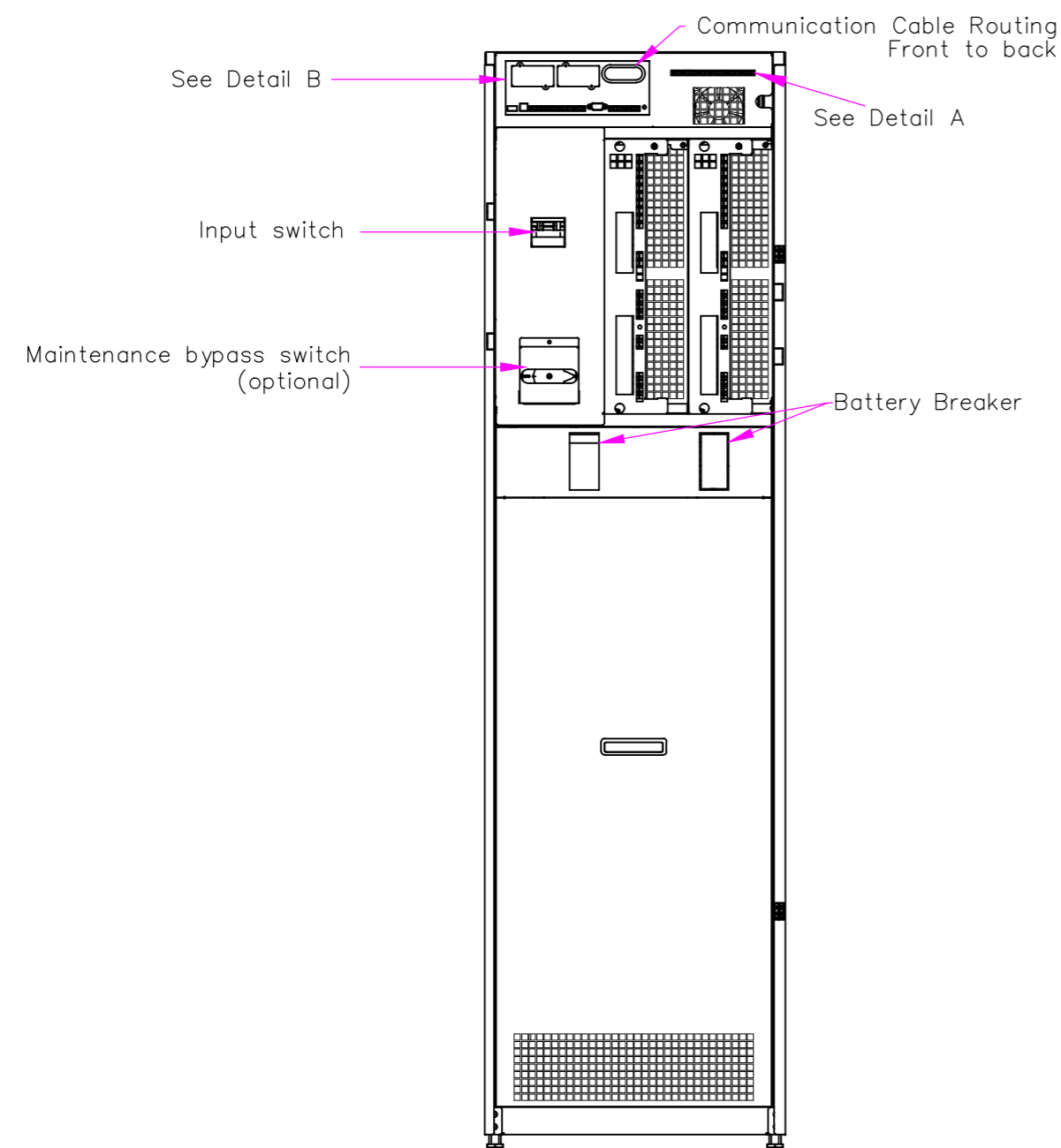
METRIC		EATON CORPORATION		
DIMENSIONS ARE IN MILLIMETERS AFTER PLATING, DIMENSIONS AND TOLERANCES IN ACCORDANCE WITH ASME Y14.5M-1994. SEE NOTES FOR TOLERANCES.				
DESCRIPTION: 91PS 8-30 kW COG and Clearance Dimensions				
ORIGINATED: MERON GEMEDA	11.05.2018	ECCO:	NAME:	REVISION: 01
MODIFIED:		DOCUMENT TYPE:	P-110000658	SCALE: 1:10
CHECKED:		AUTOCAD DRAWING	STATE: RELEASED	SHEET: 3 OF 9
SAFETY:				
APPROVED:				
EATON CORPORATION - CONFIDENTIAL AND PROPRIETARY				
NOTICE TO PERSONS RECEIVING THIS DOCUMENT AND/OR TECHNICAL INFORMATION				
THIS DOCUMENT, INCLUDING THE DRAWING AND INFORMATION CONTAINED THEREON, IS CONFIDENTIAL AND IS THE EXCLUSIVE PROPERTY OF EATON CORPORATION, AND IS LOANED AND SUBJECT TO RECALL BY EATON AT ANY TIME. BY YOUR POSSESSION OF THIS DOCUMENT, YOU ACKNOWLEDGE AND AGREE THAT THIS DOCUMENT CANNOT BE USED IN ANY MANNER, AND THAT NO PORTION OF THIS DOCUMENT MAY BE COPIED OR OTHERWISE REPRODUCED WITHOUT THE PRIOR WRITTEN CONSENT OF EATON. IN THE CASE OF CONFLICTING CONTRACTUAL PROVISIONS, THIS NOTICE SHALL GOVERN THE STATUS OF THIS DOCUMENT.				
© 2011 Eaton Corporation - All Rights Reserved.				



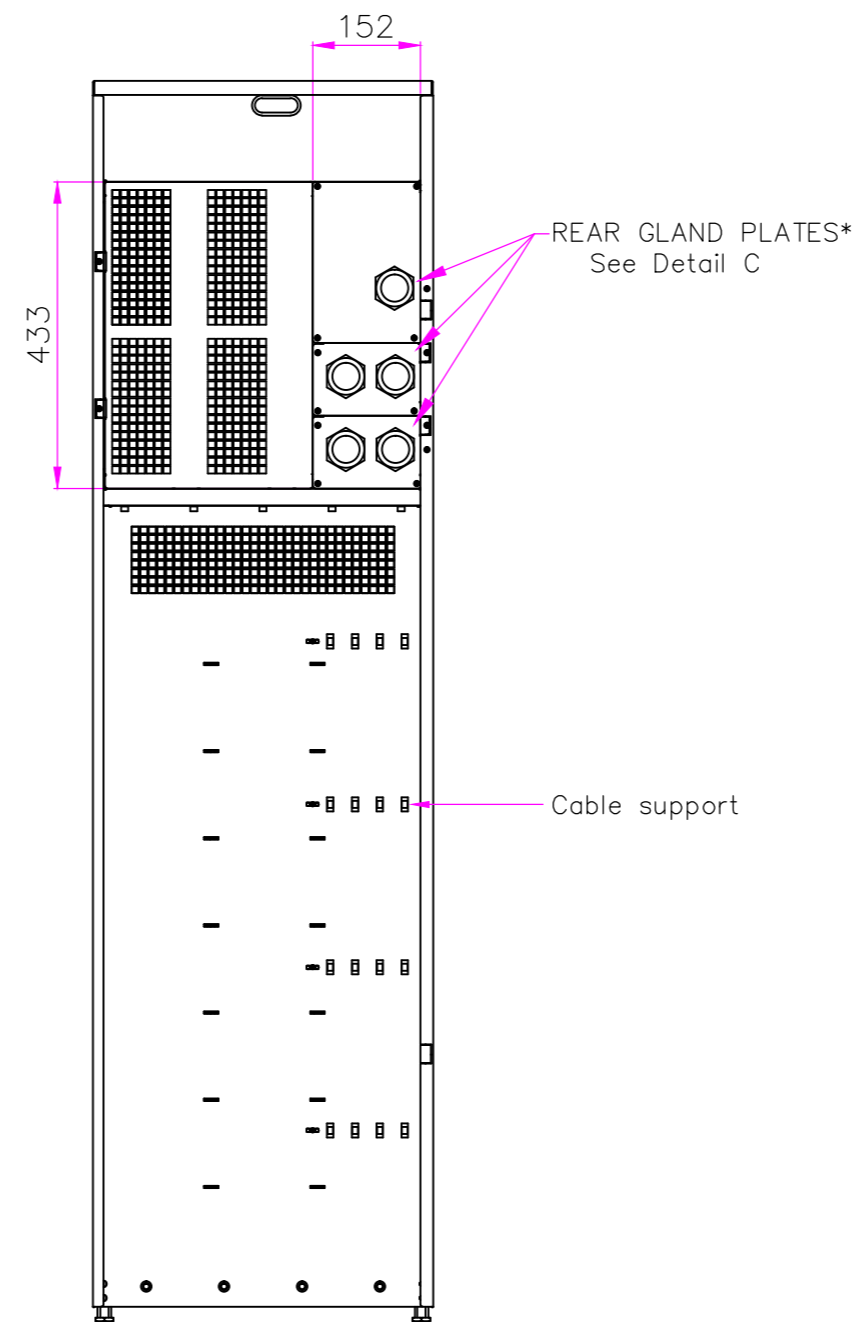
SCALE 3:1
DETAIL VIEW A



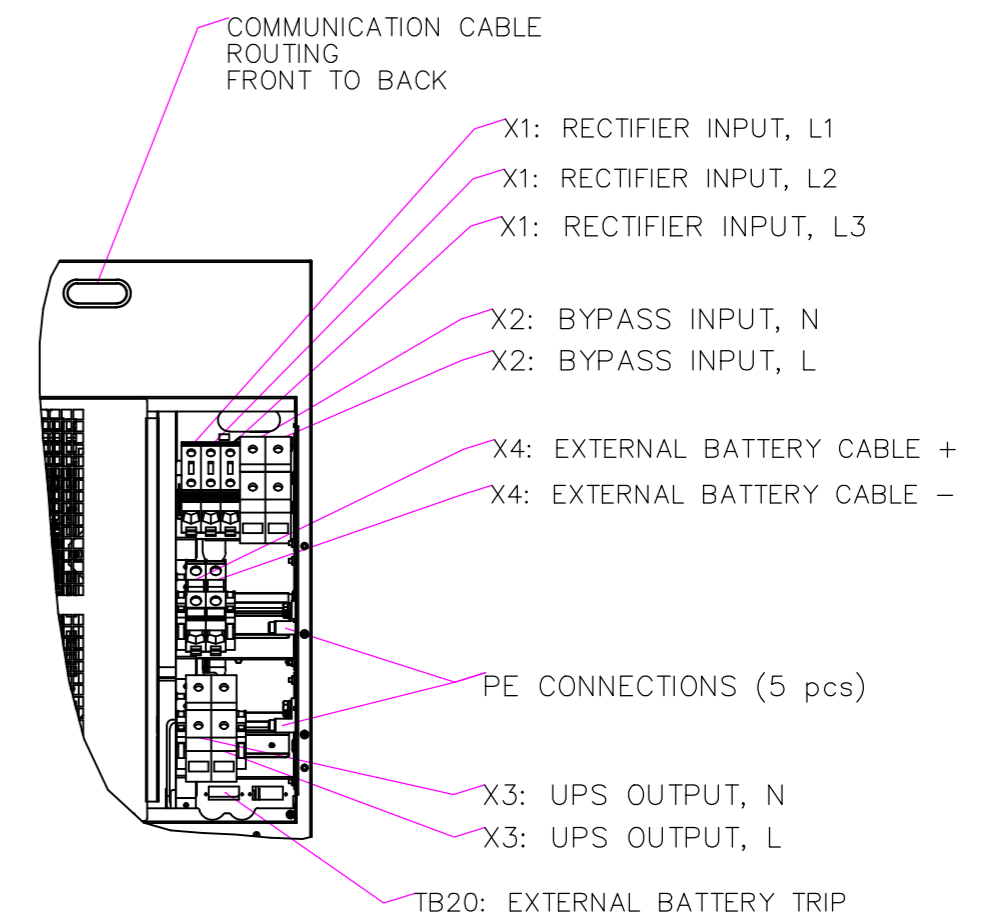
SCALE 3:1
DETAIL VIEW B



CONNECTIONS WITH FRONT PANEL REMOVED



REAR CONNECTIONS

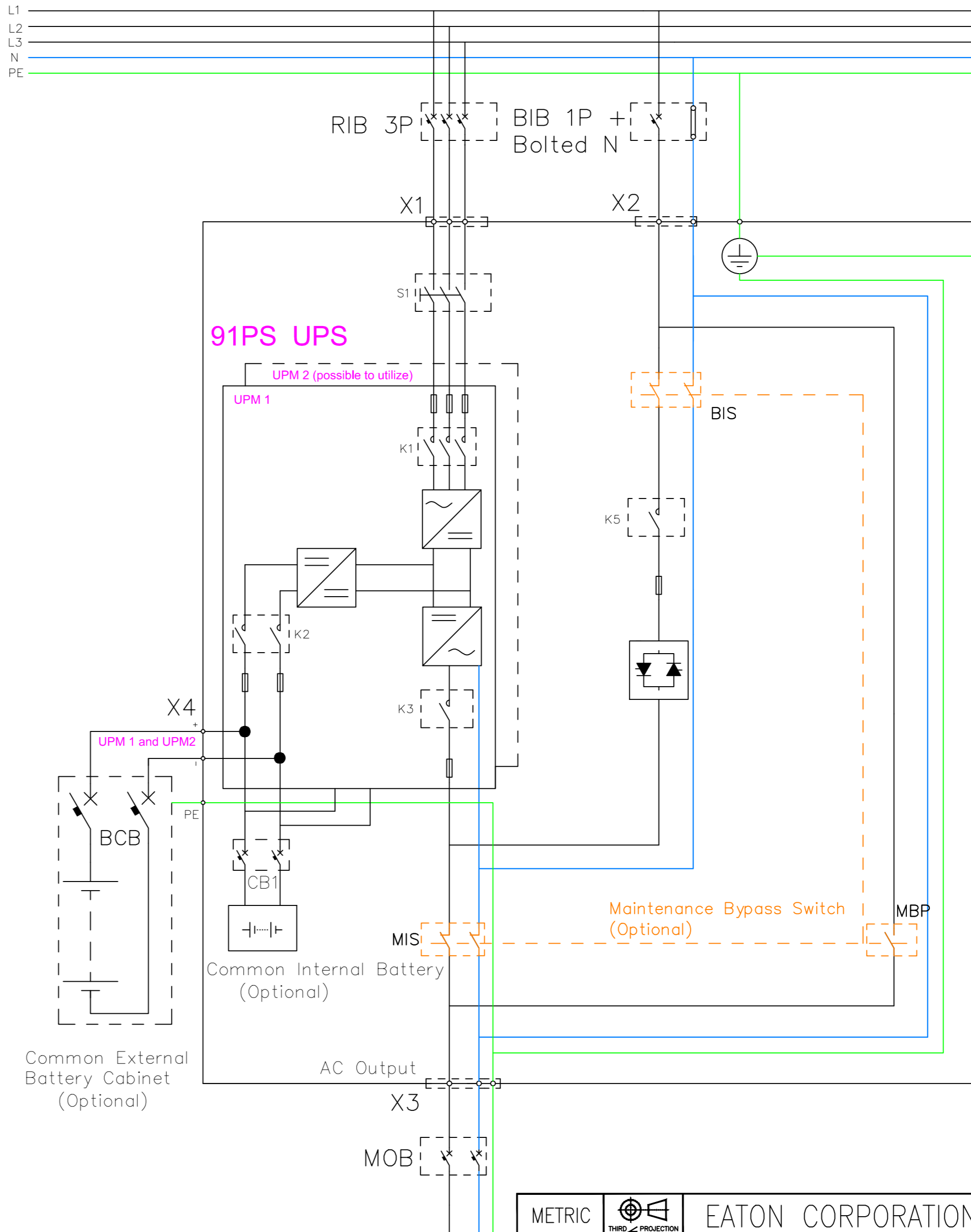
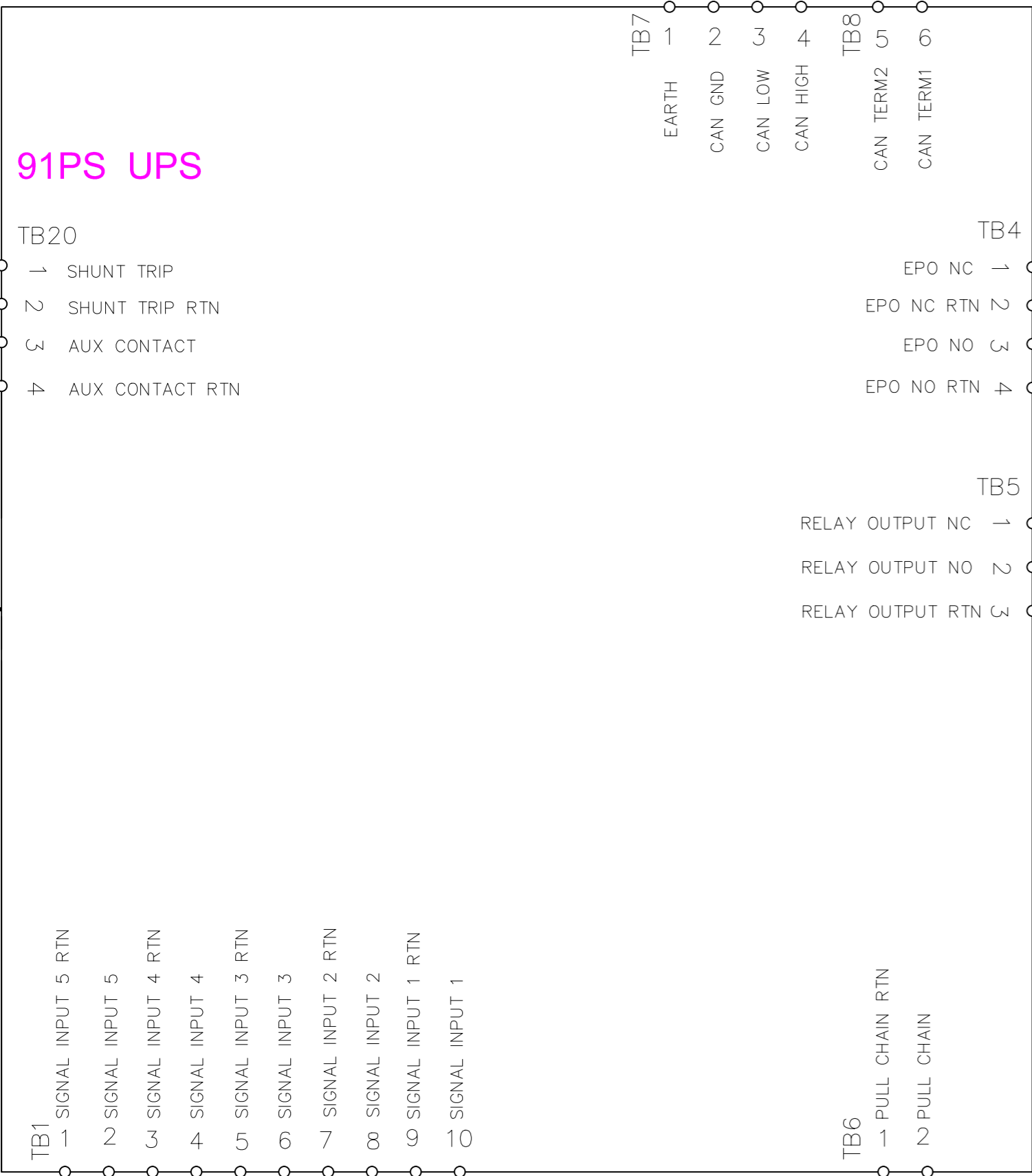


DETAIL VIEW C
CONNECTIONS BEHIND REAR GLAND PLATES

Notes:
1. M50 size cable gland plates with strain relief bushing are used on the rear side of unit for power cabling.

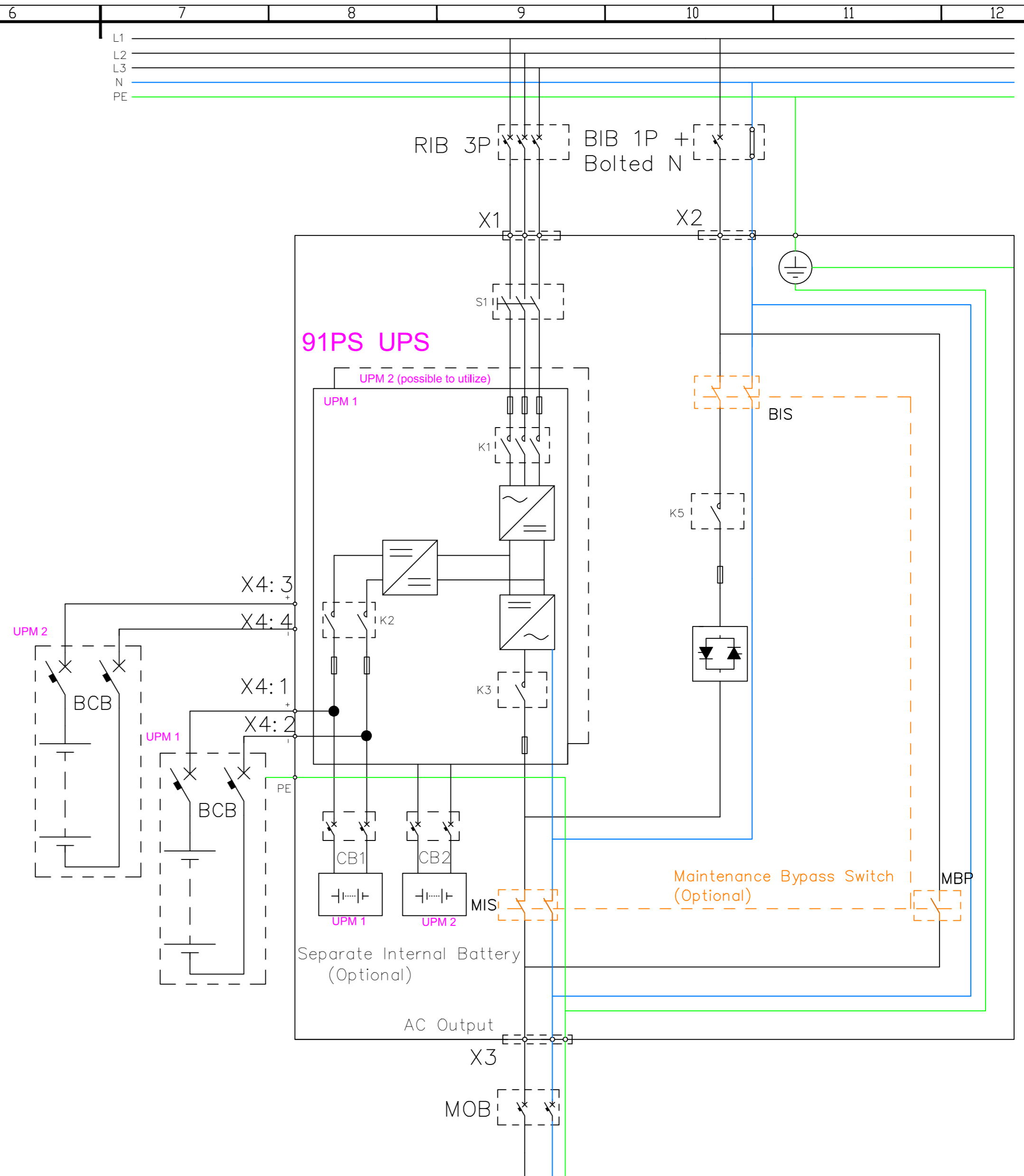
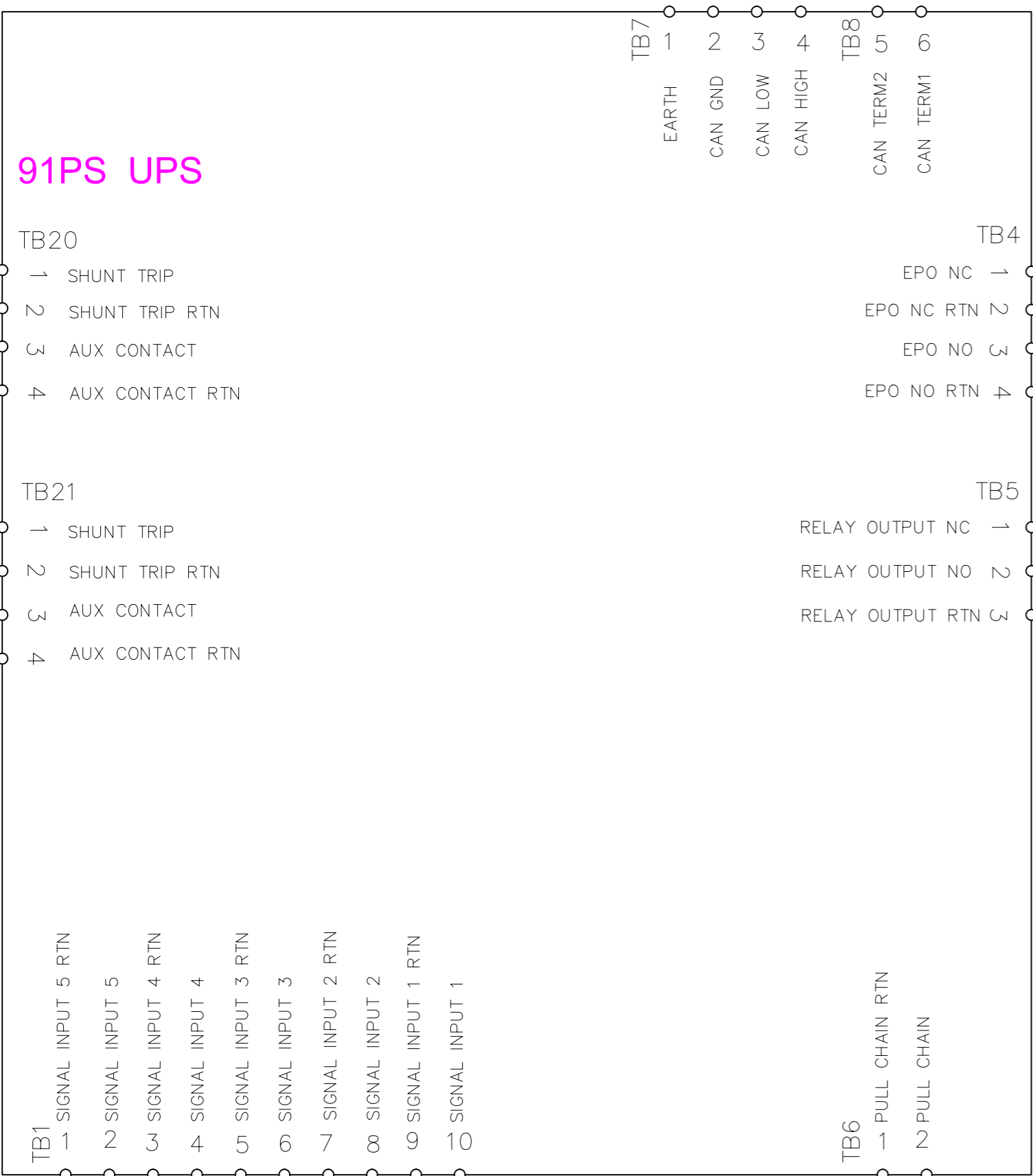
METRIC		THIRD ANGLE PROJECTION		EATON CORPORATION			
DIMENSIONS ARE IN MILLIMETERS AFTER PLATING, DIMENSIONS AND TOLERANCES IN ACCORDANCE WITH ASME Y14.5M-1994. SEE NOTES FOR TOLERANCES.							
DESCRIPTION: 91PS 8-30 kW Customer Connections							
ORIGINATED: MERON GEMEDA	11.05.2018	ECO:	NAME:	REVISION: 01	SIZE: A2	SCALE: 1:10	
MODIFIED:			DOCUMENT TYPE: P-110000658	STATE: RELEASED	SHEET: 4 OF 9		
CHECKED:			AUTOCAD DRAWING				
SAFETY:							
APPROVED:							
EATON CORPORATION - CONFIDENTIAL AND PROPRIETARY NOTICE TO PERSONS RECEIVING THIS DOCUMENT AND/OR TECHNICAL INFORMATION THIS DOCUMENT, INCLUDING THE DRAWING AND INFORMATION CONTAINED THEREON, IS CONFIDENTIAL AND IS THE EXCLUSIVE PROPERTY OF EATON CORPORATION AND IS LOANED OR SUBJECT TO RECALL BY EATON AT ANY TIME. BY TAKING POSSESSION OF THIS DOCUMENT, THE RECIPIENT ACKNOWLEDGES AND AGREES THAT THIS DOCUMENT CANNOT BE USED IN ANY MANNER UNLESS TO THE INTERESTS OF EATON AND THAT NO PORTION OF THIS DOCUMENT MAY BE COPIED OR OTHERWISE REPRODUCED WITHOUT THE PRIOR WRITTEN CONSENT OF EATON. IN THE CASE OF CONFLICTING CONTRACTUAL PROVISIONS, THIS NOTICE SHALL GOVERN THE STATUS OF THIS DOCUMENT. © 2011 Eaton Corporation - All Rights Reserved.							

91PS 8-30 kW Wiring of Single Units with Common Battery



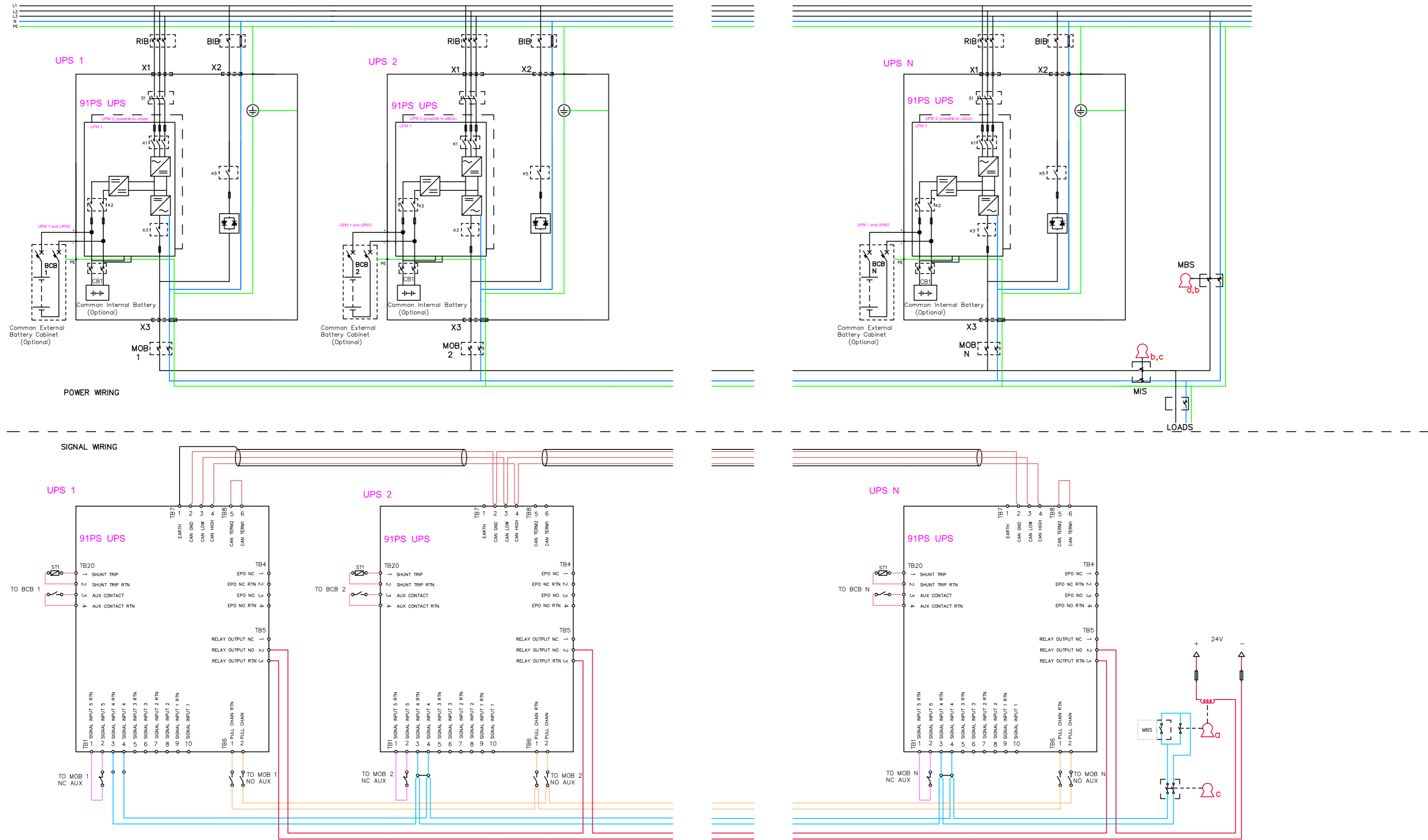
METRIC		THIRD ANGLE PROJECTION		EATON CORPORATION			
DIMENSIONS ARE IN MILLIMETERS AFTER PLATING, DIMENSIONS AND TOLERANCES IN ACCORDANCE WITH ASME Y14.5M-1994. SEE NOTES FOR TOLERANCES.							
DESCRIPTION: 91PS 8-30 kW Wiring Single Unit Common Battery							
ORIGINATED: MERON GEMEDA	11.05.2018	ECCO:	NAME:	REVISION: 01	SIZE: A2		
MODIFIED:				SCALE: 1:10			
CHECKED:		DOCUMENT TYPE:	P-110000658	STATE: RELEASED			
SAFETY:		AUTOCAD DRAWING		SHEET: 5 OF 9			
APPROVED:		EATON CORPORATION - CONFIDENTIAL AND PROPRIETARY					
NOTICE TO PERSONS RECEIVING THIS DOCUMENT AND/OR TECHNICAL INFORMATION							
THIS DOCUMENT, INCLUDING THE DRAWING AND INFORMATION CONTAINED THEREON, IS CONFIDENTIAL AND IS THE EXCLUSIVE PROPERTY OF EATON CORPORATION AND IS LOANED AND SUBJECT TO RECALL BY EATON AT ANY TIME. BY TAKING POSSESSION OF THIS DOCUMENT, THE RECEIVING PARTY ACKNOWLEDGES AND AGREES THAT THIS DOCUMENT CANNOT BE USED IN ANY MANNER, AND/OR IN THE INTERESTS OF EATON AND THAT NO PORTION OF THIS DOCUMENT MAY BE COPIED OR OTHERWISE REPRODUCED WITHOUT THE PRIOR WRITTEN CONSENT OF EATON. IN THE CASE OF CONFLICTING CONTRACTUAL PROVISIONS, THIS NOTICE SHALL GOVERN THE STATUS OF THIS DOCUMENT.							
© 2011 Eaton Corporation - All Rights Reserved.							

91PS 8-30 kW Wiring of Single Units with Separate Battery



METRIC		THIRD ANGLE PROJECTION		EATON CORPORATION			
DIMENSIONS ARE IN MILLIMETERS AFTER PLATING, DIMENSIONS AND TOLERANCES IN ACCORDANCE WITH ASME Y14.5M-1994. SEE NOTES FOR TOLERANCES.							
DESCRIPTION: 91PS 8-30 kW Wiring Single Unit Separate Battery							
ORIGINATED: MERON GEMEDA	11.05.2018	ECO:	NAME:	REVISION: 01	SIZE: A2		
MODIFIED:				SCALE: 1:10			
CHECKED:		DOCUMENT TYPE:	P-110000658		STATE: RELEASED		
SAFETY:		AUTOCAD DRAWING			SHEET: 6	OF 9	
APPROVED:		EATON CORPORATION - CONFIDENTIAL AND PROPRIETARY					
NOTICE TO PERSONS RECEIVING THIS DOCUMENT AND/OR TECHNICAL INFORMATION: THIS DOCUMENT, INCLUDING THE DRAWING AND INFORMATION CONTAINED THEREON, IS CONFIDENTIAL AND IS THE EXCLUSIVE PROPERTY OF EATON CORPORATION AND IS LOANED AND SUBJECT TO RECALL BY EATON AT ANY TIME. BY YOUR POSSESSION OF THIS DOCUMENT, YOU ACKNOWLEDGE AND AGREE THAT THIS DOCUMENT CANNOT BE USED IN ANY MANNER, AND/OR TO THE INTERESTS OF EATON AND THAT NO PORTION OF THIS DOCUMENT MAY BE COPIED OR OTHERWISE REPRODUCED WITHOUT THE PRIOR WRITTEN CONSENT OF EATON. IN THE CASE OF CONFLICTING CONTRACTUAL PROVISIONS, THIS NOTICE SHALL GOVERN THE STATUS OF THIS DOCUMENT.							
© 2011 Eaton Corporation - All Rights Reserved.							

91PS 8-30 kW Wiring of Parallel Units with Common Battery



MBS STATUS (Provided by others, Installed by others)
0.75 - 2.5mm² twisted pair (if possible, else shielded)
No earth needed

MOB STATUS (Provided by others, Installed by others)
0.75 - 2.5mm² twisted pair (if possible, else shielded)
No earth needed

PCAN (DUAL AS OPTION)
Provided by Eaton, Installed by Eaton

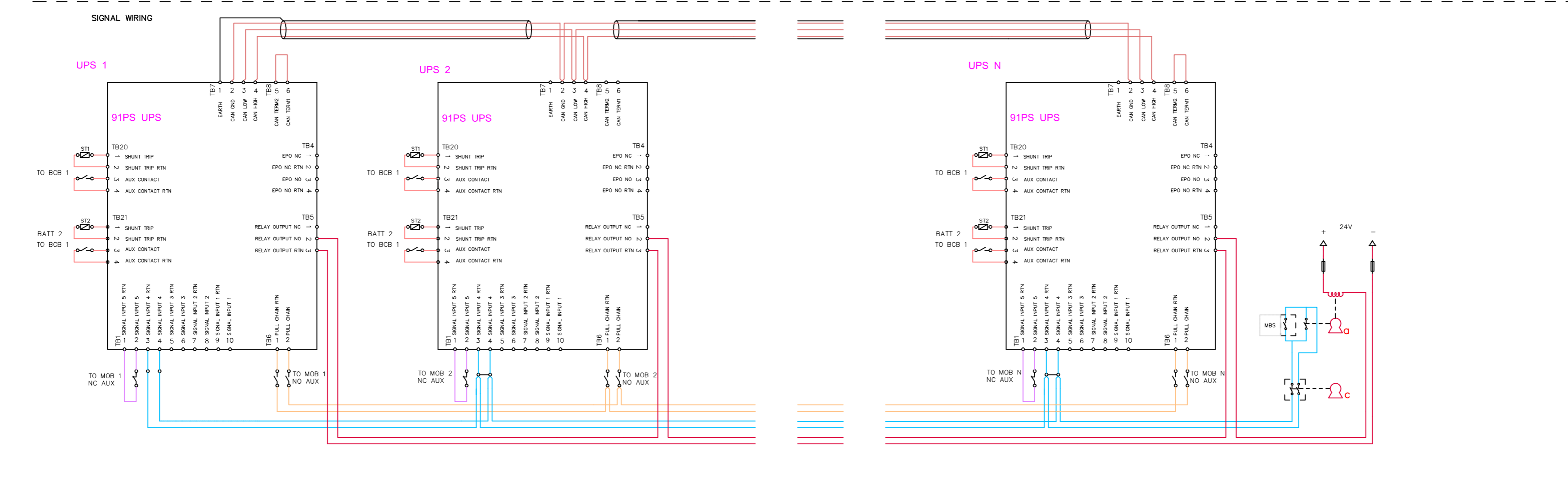
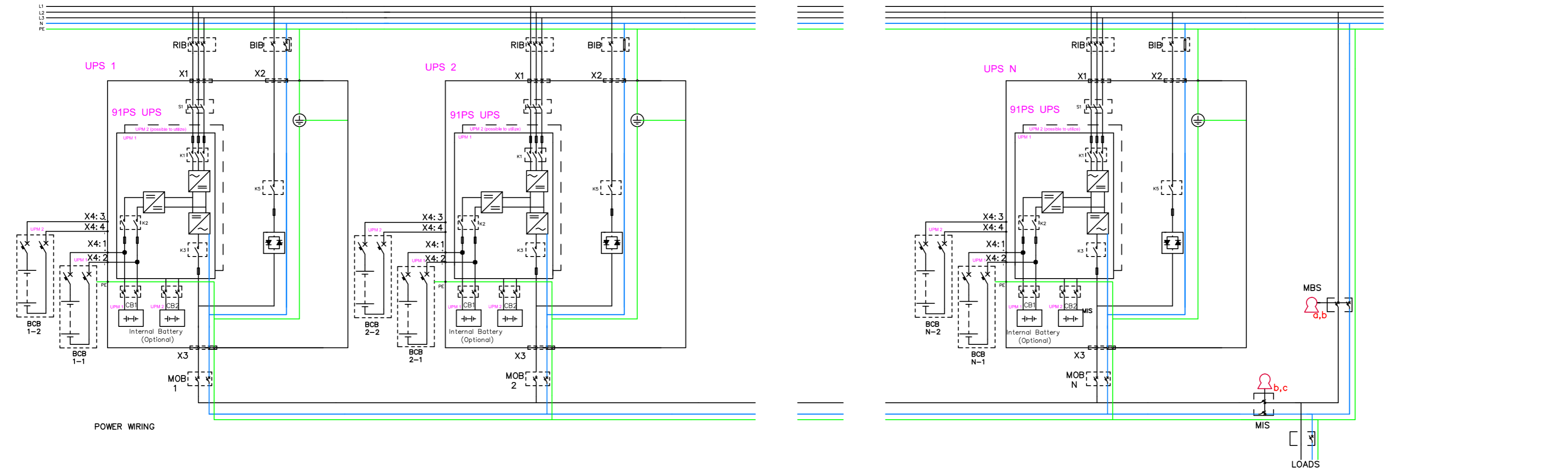
PULL CHAIN (REDUNDANT ON BYP STATUS)
Provided by Eaton, Installed by Eaton

ON BYPASS STATUS (NO INVERTORS ONLINE)
0.75 - 2.5mm², provided by others, Installed by others

- Mechanical bypass interlocking sequence
- Place UPS system to bypass. On bypass status (K3) will energize Key A solenoid to release it
 - Removing key A will switch on "force bypass" to the UPS system
 - Place key A to MBS breaker and close breaker. Key B will be released.
 - Aux contact of MBS will keep "force bypass" on UPS system
 - Place key B to MIS breaker and open MIS to isolate UPS system from load. Key C will be released
 - Place key C to it's dedicated keyhole to release "force bypass" command to allow UPS system testing

METRIC		EATON CORPORATION			
DIMENSIONS ARE IN MILLIMETERS AFTER PLATING, DIMENSIONS AND TOLERANCES IN ACCORDANCE WITH ASME Y14.5M-1994. SEE NOTES FOR TOLERANCES.					
DESCRIPTION: 91PS 8-30 kW Wiring Parallel Units Common Battery					
ORIGINATED: MERON GEMEDA	11.05.2018	ECC:	NAME:	REVISION: 01	SIZE: A2
MODIFIED:				STATE: RELEASED	SCALE: N/A
CHECKED:		DOCUMENT TYPE:	P-110000658		SHEET: 7 OF 9
SAFETY:		AUTOCAD DRAWING			
APPROVED:		EATON CORPORATION - CONFIDENTIAL AND PROPRIETARY			
NOTICE TO PERSONS RECEIVING THIS DOCUMENT AND/OR TECHNICAL INFORMATION					
THIS DOCUMENT, INCLUDING THE DRAWING AND INFORMATION CONTAINED THEREON, IS CONFIDENTIAL AND IS THE EXCLUSIVE PROPERTY OF EATON CORPORATION AND IS LOANED AND SUBJECT TO RECALL BY EATON AT ANY TIME. BY YOUR POSSESSION OF THIS DOCUMENT, THE RECIPIENT ACKNOWLEDGES AND AGREES THAT THIS DOCUMENT CANNOT BE USED IN ANY MANNER UNLESS TO THE INTERESTS OF EATON AND THAT NO PORTION OF THIS DOCUMENT MAY BE COPIED OR OTHERWISE REPRODUCED WITHOUT THE PRIOR WRITTEN CONSENT OF EATON. IN THE CASE OF CONFLICTING CONTRACTUAL PROVISIONS, THIS NOTICE SHALL GOVERN THE STATUS OF THIS DOCUMENT.					
© 2011 Eaton Corporation - All Rights Reserved					

91PS 8-30 kW Wiring of Parallel Units with Separate Battery



MBS STATUS (Provided by others, Installed by others)
0.75 - 2.5mm² twisted pair (if possible, else shielded)
No earth needed

MOB STATUS (Provided by others, Installed by others)
0.75 - 2.5mm² twisted pair (if possible, else shielded)
No earth needed

PCAN (DUAL AS OPTION)
Provided by Eaton, Installed by Eaton

PULL CHAIN (REDUNDANT ON BYP STATUS)
Provided by Eaton, Installed by Eaton

ON BYPASS STATUS (NO INVERTORS ONLINE)
0.75 - 2.5mm², provided by others, Installed by others

- Mechanical bypass interlocking sequence
1. Place UPS system to bypass. On bypass status (K3) will energize Key A solenoid to release it
 2. Removing key A will switch on "force bypass" to the UPS system
 3. Place key A to MBS breaker and close breaker. Key B will be released.
 4. Aux contact of MBS will keep "force bypass" on UPS system
 5. Place key B to MIS breaker and open MIS to isolate UPS system from load. Key C will be released
 6. Place key C to it's dedicated keyhole to release "force bypass" command to allow UPS system testing

METRIC		EATON CORPORATION	
DIMENSIONS ARE IN MILLIMETERS AFTER PLATING, DIMENSIONS AND TOLERANCES IN ACCORDANCE WITH ASME Y14.5M-1994. SEE NOTES FOR TOLERANCES.			
DESCRIPTION: 91PS 8-30 kW Wiring Parallel Units			
ORIGINATED: MERON GEMEDA	11.05.2018	ECCO:	NAME:
MODIFIED:		DOCUMENT TYPE:	P-110000658
CHECKED:		AUTOCAD DRAWING	STATE:
SAFETY:			RELEASED
APPROVED:			
EATON CORPORATION - CONFIDENTIAL AND PROPRIETARY			
NOTICE TO PERSONS RECEIVING THIS DOCUMENT AND/OR TECHNICAL INFORMATION			
THIS DOCUMENT, INCLUDING THE DRAWING AND INFORMATION CONTAINED THEREON, IS CONFIDENTIAL AND IS THE EXCLUSIVE PROPERTY OF EATON CORPORATION AND IS LOANED TO YOU AND SUBJECT TO RECALL BY EATON AT ANY TIME.			
BY YOUR POSSESSION OF THIS DOCUMENT, YOU ACKNOWLEDGE AND AGREE THAT THIS DOCUMENT CANNOT BE USED IN ANY MANNER UNLESS TO THE INTERESTS OF EATON AND THAT NO PORTION OF THIS DOCUMENT MAY BE COPIED OR OTHERWISE REPRODUCED WITHOUT THE PRIOR WRITTEN CONSENT OF EATON. IN THE CASE OF CONFLICTING CONTRACTUAL PROVISIONS, THIS NOTICE SHALL GOVERN THE STATUS OF THIS DOCUMENT.			
© 2011 Eaton Corporation - All Rights Reserved			

91PS 8-30 kW UPS Site Planning Data

Product Specifications

UPS Rating		Rectifier AC Input	3P Rectifier Input Breaker (RIB)		Bypass AC Input	1P+Bolted N Bypass Input Breaker (BIB)			AC Output	2P Inverter AC output Breaker MOB			Battery Breaker (BCB) (Ratings at the end of discharge, 1.67 V/cell)				For Single Unit Maintenance Bypass Switch (MBS)	For Parallel Units Common Maintenance Bypass Switch (MBS)		
			Nominal Current	Maximum Current		Nominal Current at 230 V Input	Maximum Current at 15% under voltage	Integrated Bypass Fuse		Output Current	Inverter Short Circuit Current	Auxiliary Switches	Rating	Separate Battery Configuration (UPM Bttery)	Common Battery Configuration (UPS Battery)	Trip Device (Shunt Trip)	Auxiliary Switches	Rating	Rating	Auxiliary Switches
kVA	kW	V	A	A	V	A	A	Type	V	A	A / 300 ms	Qty	VDC	A	A	VDC	Qty	A	A	Qty
8	8	400	12	18	230	36	41	3 x 200FEE (parallel)	230	36	310	2	500	63	125	24	1	36	36 x N	1
10	10	400	15	22	230	45	51	3 x 200FEE (parallel)	230	45	310	2	500	63	125	24	1	45	45 x N	1
15	15	400	23	29	230	68	77	3 x 200FEE (parallel)	230	68	310	2	500	63	125	24	1	68	68 x N	1
20	20	400	30	38	230	91	102	3 x 200FEE (parallel)	230	91	310	2	500	63	125	24	1	91	91 x N	1
30	30	400	45	57	230	136	153	3 x 200FEE (parallel)	230	136	310	2	500	63	125	24	1	136	136 x N	1

Minimum recommended cable and fuse sizes (common battery)

UPS RATING kW	Rectifier cable [mm ²]	Rectifier Fuse [A]	Bypass, output cable [mm ²]	Bypass Fuse [A]	PE Cable [mm ²]	POS. & NEG. Line [mm ²]	Battery Fuse [A]	EXT BATT PE Cable [mm ²]
8	2,5	20	10	50	10	35	125	16
10	4	20	16	63	16	35	125	16
15	10	32	25	80	16	35	125	16
20	10	40	35	100	16	35	125	16
30	16	63	70	160	35	35	125	16

Minimum recommended cable and fuse sizes (separate battery)

UPS RATING kW	Rectifier cable [mm ²]	Rectifier Fuse [A]	Bypass, output cable [mm ²]	Bypass Fuse [A]	PE Cable [mm ²]	POS. & NEG. Line [mm ²]	Battery Fuse [A]	EXT BATT PE Cable [mm ²]
8	2,5	20	10	50	10	16	63	16
10	4	20	16	63	16	16	63	16
15	10	32	25	80	16	16	63	16
20	10	40	35	100	16	16	63	16
30	16	63	70	160	35	16	63	16

Maximum conductor cross section

Rectifier/Bypass/Output	Bypass/Output	EXT. Battery (common)	EXT. Battery (separate)
Solid/stranded wire: 70 mm ² Stranded wire with ferrule: 50 mm ²	Solid/stranded wire: 95 mm ² Stranded wire with ferrule: 95 mm ²	Solid/stranded wire: 95 mm ² Stranded wire with ferrule: 70 mm ²	Solid/stranded wire: 50 mm ² Stranded wire with ferrule: 35 mm ²

Notes:

1. Rectifier AC input current calculations: Nominal – 100% load without charging; Maximum – 100% load with maximum charging (Rectifier current limit).
2. Inverter AC output current calculation: At 100% rated output load.
3. The system must be installed on a level floor suitable for computer or electronic equipment.
4. All wiring and installations must be in accordance with applicable National and Local Electric Regulations.
5. Rectifier AC input to UPS: (3) phases and (1) ground.
Bypass AC input to UPS: (1) phase, (1) neutral, (1) ground.
AC output to load: (1) phase, (1) neutral, (1) ground.
DC input from battery to UPS: (1) positive, (1) negative, (1) ground.
6. All breakers should be adjusted according to the specified Ampere values to protect the UPS and installation.
7. The static bypass switch is rated to a maximum value of 59 Amperes, nominal current at 400v and 85 Amperes, maximum current at 15% under voltage. If using the bigger rating BIB than mentioned in the table, output cable thermal protection should be rechecked.
8. For UPS installation that utilizes single feed input, The input breaker should be configured according to the rated rectifier input current.
9. Cable sizing is based on the standard IEC 60364-5-52 and IEC 60364-5-54. The sizing is for 70°C rated copper cables.
10. Specifications are subject to change.

METRIC	THIRD ANGLE PROJECTION	EATON CORPORATION	
DIMENSIONS ARE IN MILLIMETERS AFTER PLATING, DIMENSIONS AND TOLERANCES IN ACCORDANCE WITH ASME Y14.5M-1994. SEE NOTES FOR TOLERANCES.			
DESCRIPTION: 91PS 8-30 kW Product specifications			
ORIGINATED: MERON GEMEDA	11.05.2018	ECO:	NAME:
MODIFIED:		DOCUMENT TYPE:	P-110000658
CHECKED:		SAFETY:	STATE: RELEASED
APPROVED:		REVISION: 01	SCALE: N/A
		SHEET: 9	OF 9

EATON CORPORATION – CONFIDENTIAL AND PROPRIETARY
NOTICE TO PERSONS RECEIVING THIS DOCUMENT AND/OR TECHNICAL INFORMATION
THIS DOCUMENT, INCLUDING THE DRAWING AND INFORMATION CONTAINED THEREON, IS CONFIDENTIAL AND IS THE EXCLUSIVE PROPERTY OF EATON CORPORATION AND IS LOANED TO YOU BY EATON AT ANY TIME. BY YOUR POSSESSION OF THIS DOCUMENT, YOU ACKNOWLEDGE AND AGREE THAT THIS DOCUMENT CANNOT BE USED IN ANY MANNER, AND THAT NO PORTION OF THIS DOCUMENT MAY BE COPIED OR OTHERWISE REPRODUCED WITHOUT THE PRIOR WRITTEN CONSENT OF EATON. IN THE CASE OF CONFLICTING CONTRACTUAL PROVISIONS, THIS NOTICE SHALL GOVERN THE STATUS OF THIS DOCUMENT.
© 2011 Eaton Corporation – All Rights Reserved.