



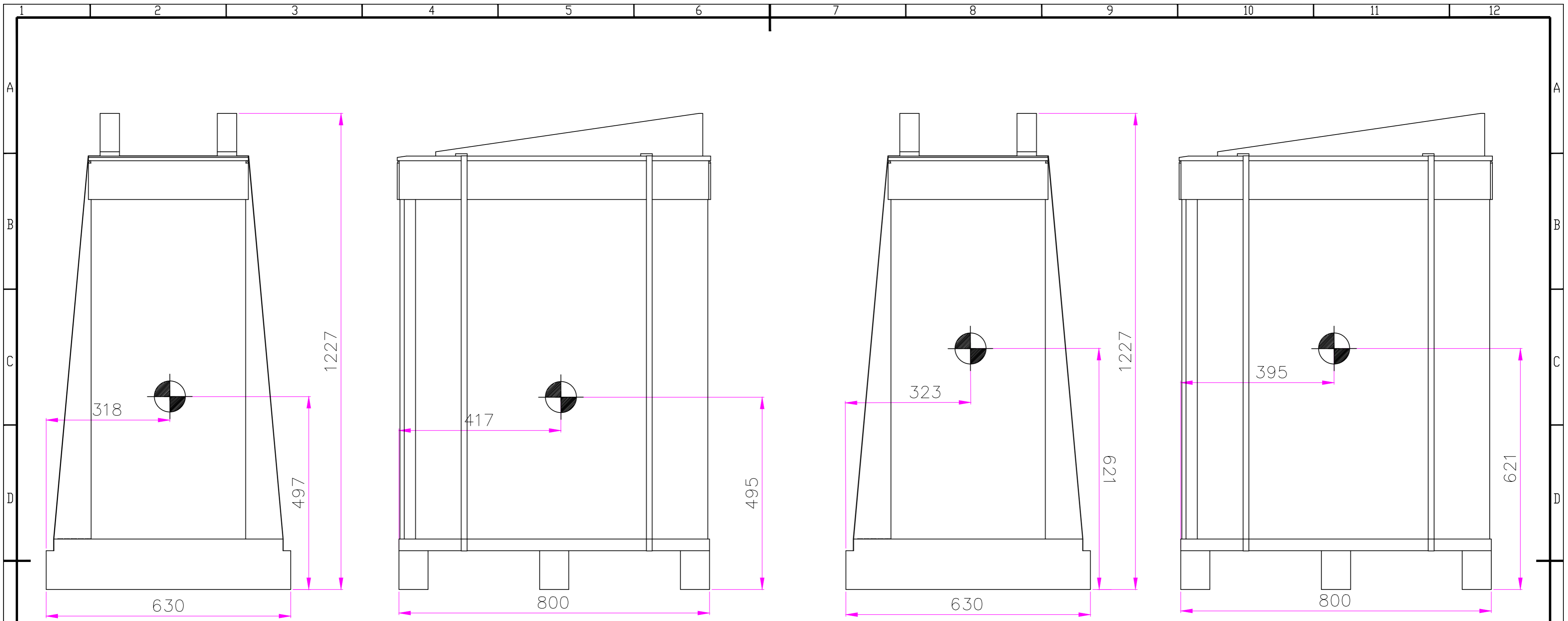
Powering Business Worldwide



SITE PLANNING DATA Eaton 91PS 8-10 kW

Page 1	Packaging Dimensions
Page 2	Dimensional Drawings
Page 3	COG(Center Of Gravity) and Clearance Dimensions
Page 4	Customer Connections
Page 5	Electrical Wiring of Single Unit(3:1)
Page 6	Electrical Wiring of Single Unit(1:1)
Page 7	Electrical & Signal Wiring of Parallel Units(3:1)
Page 8	Electrical & Signal Wiring of Parallel Units(1:1)
Page 9	Product Specifications(3:1)
Page 10	Product Specifications(1:1)

METRIC		EATON CORPORATION		
DIMENSIONS ARE IN MILLIMETERS AFTER PLATING, DIMENSIONS AND TOLERANCES IN ACCORDANCE WITH ASME Y14.5M-1994. SEE NOTES FOR TOLERANCES.				
DESCRIPTION: Eaton 91PS 8-10 kW				
ORIGINATED: MERON GEMEDA	04.05.2018	ECO:	NAME:	REVISION: 01
MODIFIED:			P-110000656	SCALE: N/A
CHECKED:		DOCUMENT TYPE:	STATE:	RELEASED
SAFETY:		AUTOCAD DRAWING		SHEET: OF N/A
APPROVED:				
EATON CORPORATION - CONFIDENTIAL AND PROPRIETARY				
NOTICE TO PERSONS RECEIVING THIS DOCUMENT AND/OR TECHNICAL INFORMATION				
THIS DOCUMENT, INCLUDING THE DRAWING AND INFORMATION CONTAINED THEREON, IS CONFIDENTIAL AND IS THE EXCLUSIVE PROPERTY OF EATON CORPORATION, AND IS LOANED AND SUBJECT TO RECALL BY EATON AT ANY TIME.				
BY TAKING POSSESSION OF THIS DOCUMENT, THE RECIPIENT ACKNOWLEDGES AND AGREES THAT THIS DOCUMENT CANNOT BE USED IN ANY MANNER UNLESS TO THE INTERESTS OF EATON AND THAT NO PORTION OF THIS DOCUMENT MAY BE COPIED OR OTHERWISE REPRODUCED WITHOUT THE PRIOR WRITTEN CONSENT OF EATON. IN THE CASE OF CONFLICTING CONTRACTUAL PROVISIONS, THIS NOTICE SHALL GOVERN THE STATUS OF THIS DOCUMENT.				
© 2018 Eaton Corporation - All Rights Reserved.				



COG(Center of Gravity) dimensions with internal batteries

COG(Center Of Gravity) dimensions without internal batteries

Notes:

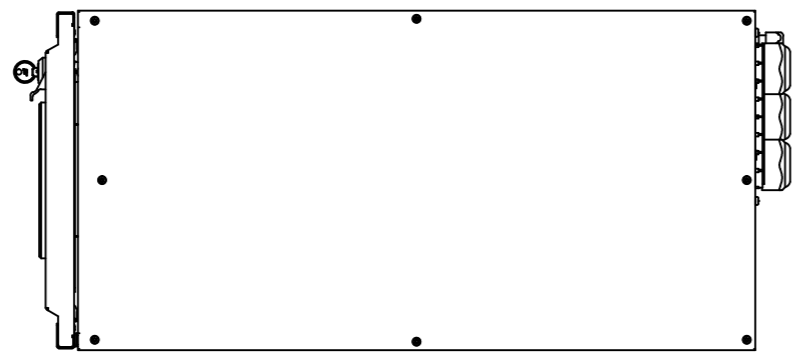
1. The COG dimensions are approximated values with pallet and packaging including batteries and without batteries.
2. The COG dimensions of UPS cabinet with package are X=318 mm, Y=417 mm, Z=495 mm including batteries and X=323 mm, Y=395 mm, Z=621 mm without batteries.
3. Store the unit in a dry and clean environment. Protect the unit from high humidity, rain or other direct exposure to water and also protect it from exposure to dirt and dust.
4. Optimal storing temperature for the unit without batteries is +15°C to +30°C and for batteries +20°C to +25°C.
5. Units without batteries can be stored in -25°C to +55°C without risk of immediate damage.
6. Storing batteries above +25°C will shorten the battery lifetime.
7. Batteries can be stored for six months without charging in temperature +20°C to +25°C, but batteries should not be stored uninstalled more than absolute necessary.
8. If batteries are stored above +25°C then batteries should be charged every four months.
9. Storing batteries longer than recommended without charging can harm the battery permanently.

Product Specifications				
UPS Rating		Shipping Dimensions W x D x H	Approx. Weight Shipping with Batteries	Approx. Weight Shipping without Batteries
kVA	kW	mm	kg	kg
8-10	8-10	630 x 800 x 1230	188	98

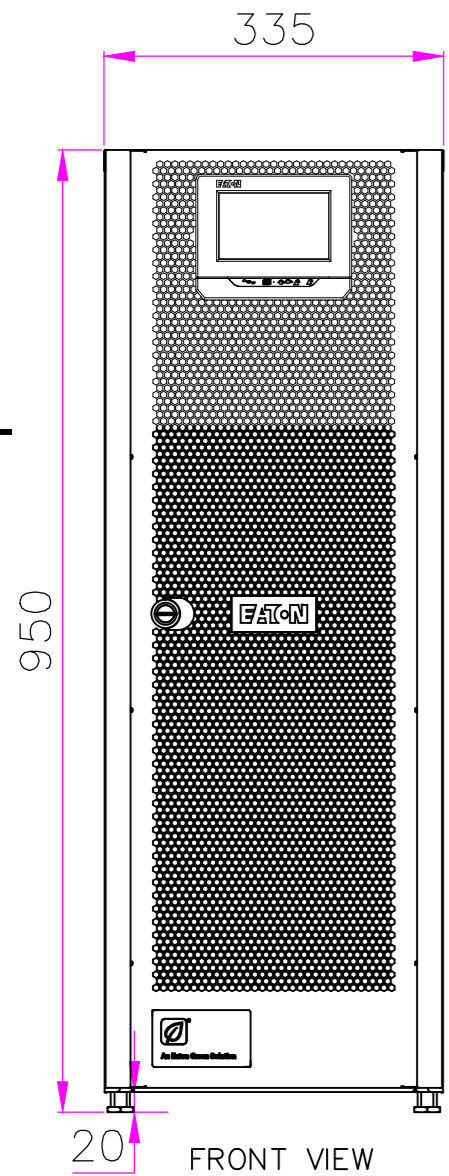
METRIC		THIRD ANGLE PROJECTION		EATON CORPORATION			
DIMENSIONS ARE IN MILLIMETERS AFTER PLATING, DIMENSIONS AND TOLERANCES IN ACCORDANCE WITH ASME Y14.5M-1994. SEE NOTES FOR TOLERANCES.							
DESCRIPTION: Eaton 91PS 8-10 kW Packaging Dimensions							
ORIGINATED: MEORN GEMEDA	04.05.2018	ECO:	NAME:	REVISION: 01	SIZE: A2		
MODIFIED:		DOCUMENT TYPE:	P-110000656	STATE: RELEASED	SCALE: 1:8		
CHECKED:		AUTOCAD DRAWING			SHEET: 1	OF 10	
SAFETY:							
APPROVED:							
EATON CORPORATION - CONFIDENTIAL AND PROPRIETARY							
NOTICE TO PERSONS RECEIVING THIS DOCUMENT AND/OR TECHNICAL INFORMATION							
THIS DOCUMENT, INCLUDING THE DRAWING AND INFORMATION CONTAINED THEREON, IS CONFIDENTIAL AND IS THE EXCLUSIVE PROPERTY OF EATON CORPORATION AND IS LOANED AND SUBJECT TO RECALL BY EATON AT ANY TIME. BY YOUR POSSESSION OF THIS DOCUMENT, YOU HEREBY ACKNOWLEDGE AND AGREE THAT THIS DOCUMENT CANNOT BE USED IN ANY MANNER, AND THAT NO PORTION OF THIS DOCUMENT MAY BE COPIED OR OTHERWISE REPRODUCED WITHOUT THE PRIOR WRITTEN CONSENT OF EATON. IN THE CASE OF CONFLICTING CONTRACTUAL PROVISIONS, THIS NOTICE SHALL GOVERN THE STATUS OF THIS DOCUMENT.							
© 2018 Eaton Corporation - All Rights Reserved							

1 2 3 4 5 6 7 8 9 10 11 12

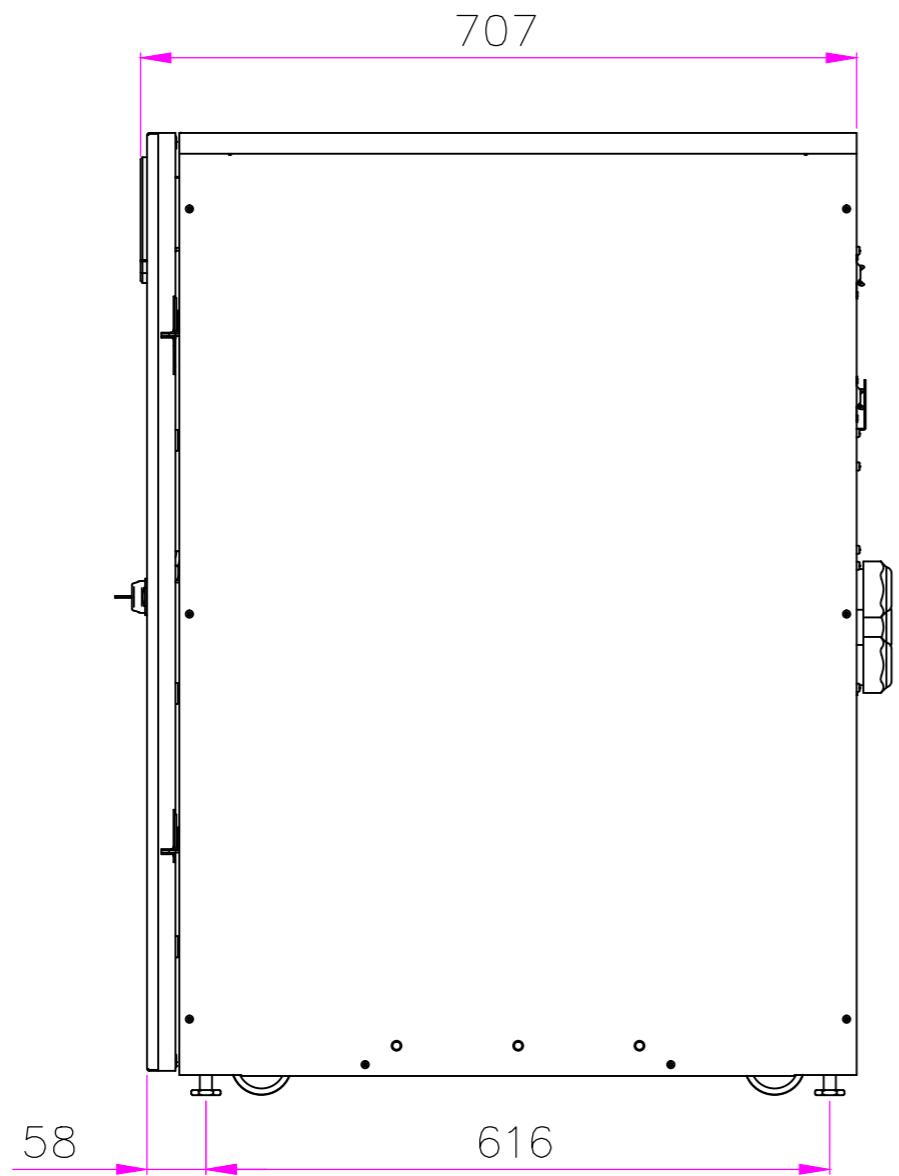
Product Specifications										
UPS Rating		Max Heat Dissipation at 100% Load	Cabinet Dimensions W x D x H	Shipping Dimensions W x D x H	Approx. Weight Cabinet With Batteries	Approx. Weight Cabinet without Batteries	Approx. Weight Shipping with Batteries	Approx. Weight Shipping without Batteries	Floor Landing	Cooling air
kVA	kW	W	mm	mm	kg	kg	kg	kg	kg/m ²	l/s
8	8	368	335 x 750 x 950	630 x 800 x 1230	163	73	188	98	700	30
10	10	460	335 x 750 x 950	630 x 800 x 1230	163	73	188	98	700	30



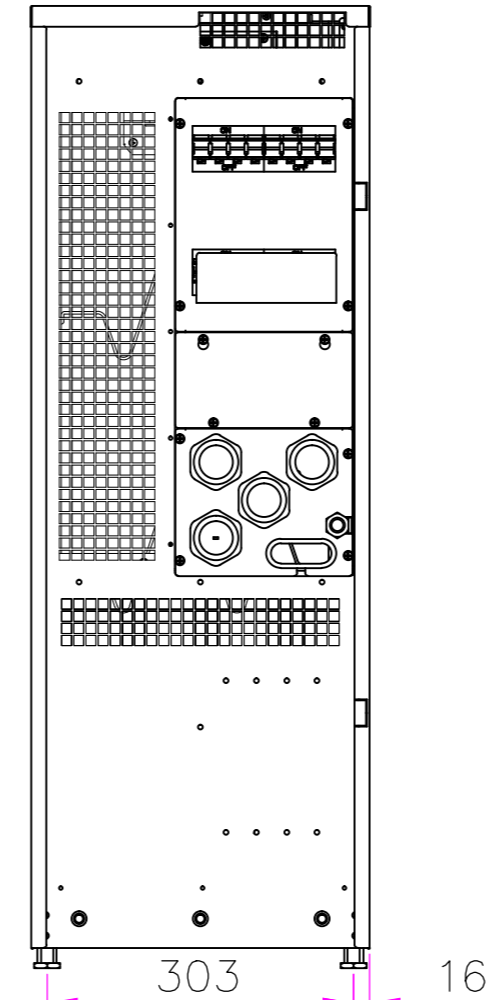
TOP VIEW



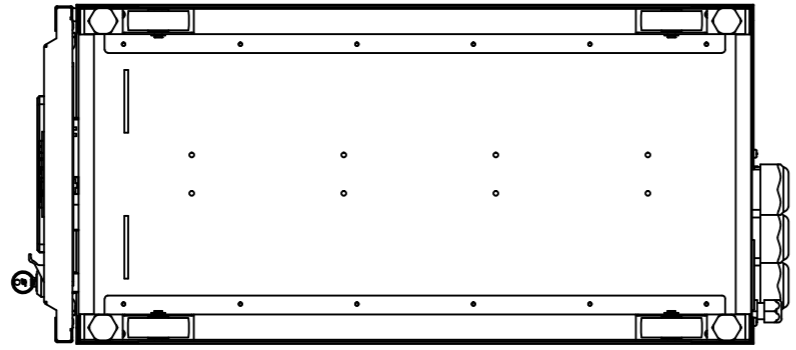
FRONT VIEW



RIGHT VIEW

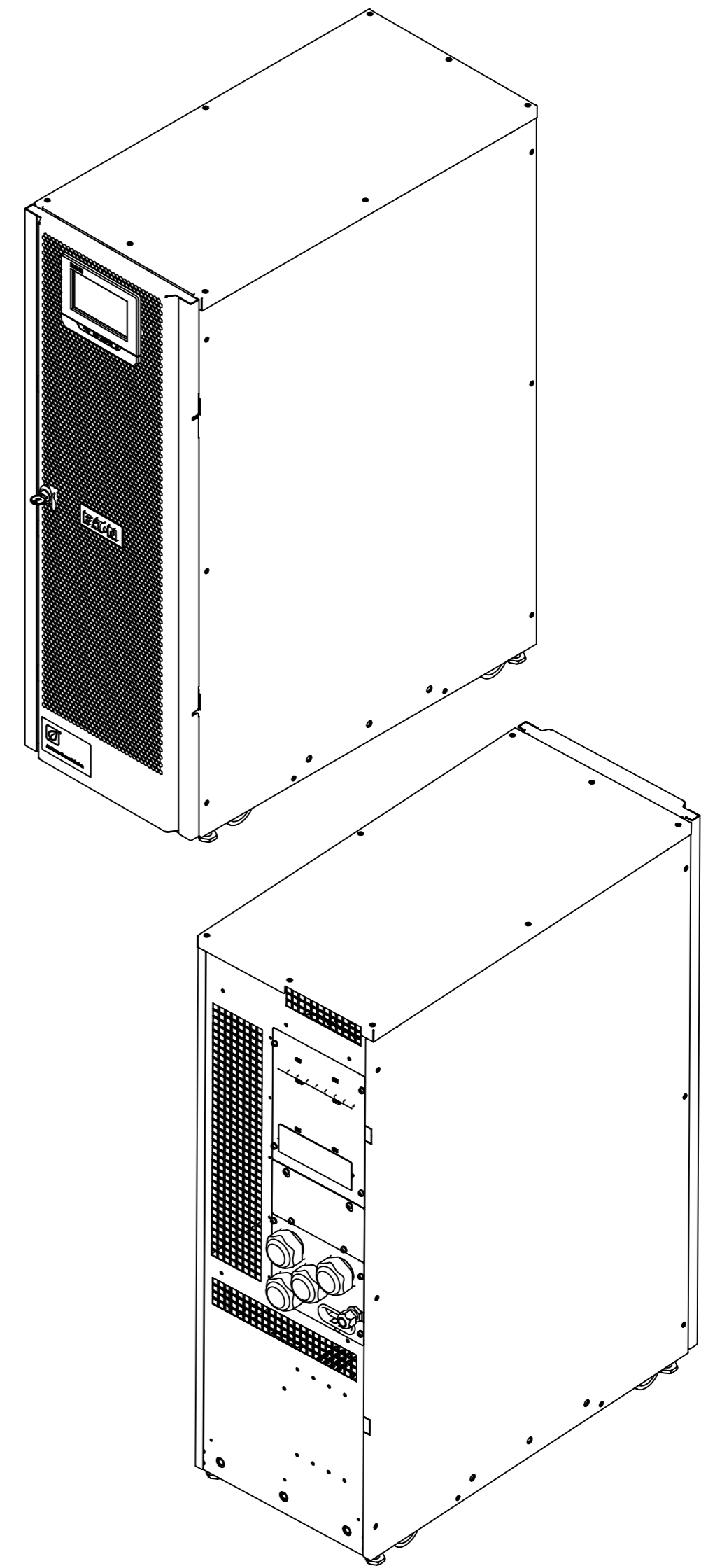


REAR VIEW



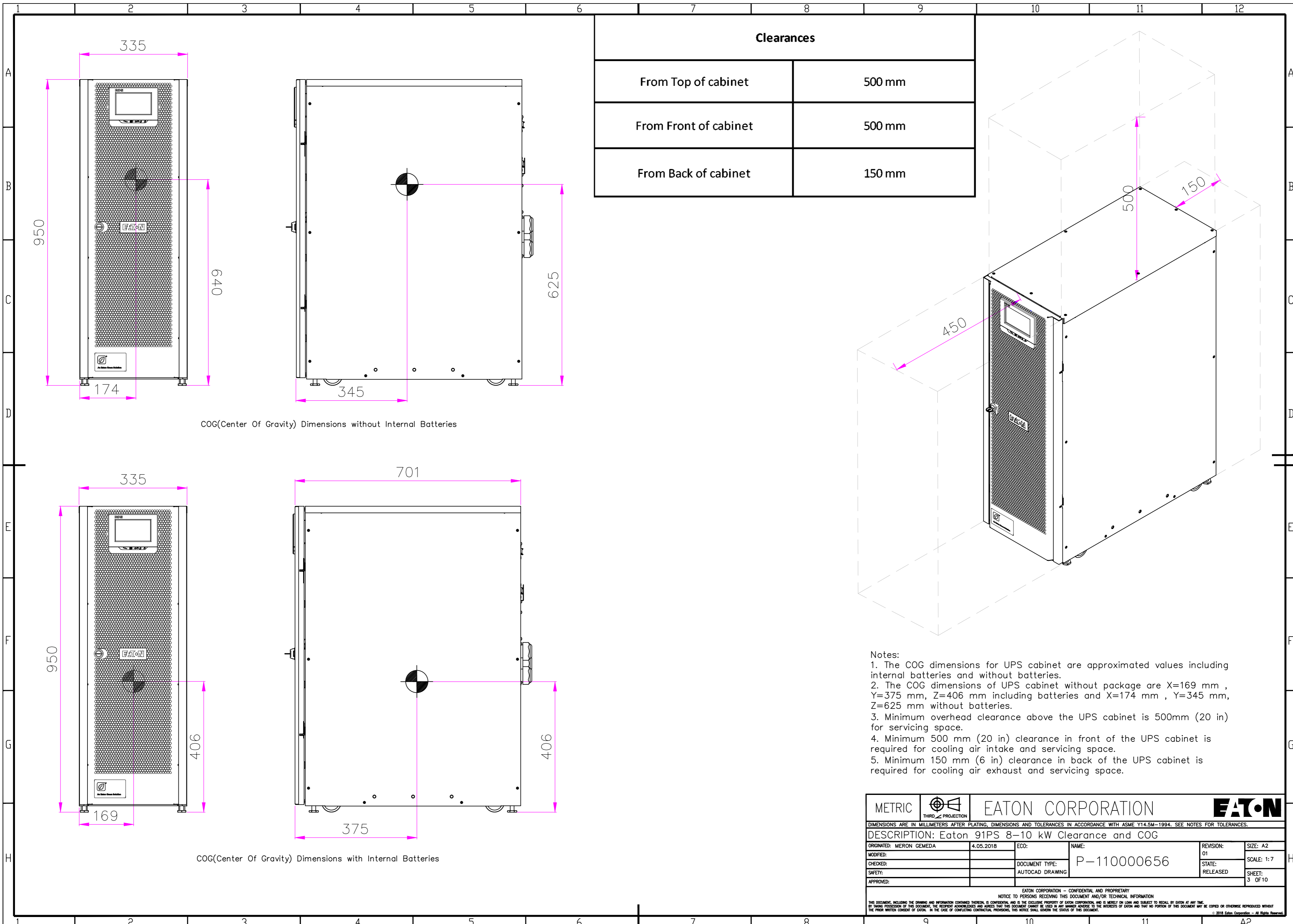
BOTTOM VIEW

- Notes:
1. The system must be installed in a temperature and humidity controlled indoor area free of conductive contaminants.
 2. Continuous ambient temperature range: 0–40°C (32–104F); Maximum relative humidity: 95% non-condensing.
 3. The UPS can be installed in line-up-and-match or standalone configurations.
 4. The rear cable entries through the removable access gland plate are standard. Access plates shall be custom-modified to suit conduit sizes.
 5. Ensure the necessary minimum air flow rate of 1,5 m³/h for internal batteries to avoid explosive gas mixture that can be created if the hydrogen concentration exceeds 4% by volume in air.
 6. For larger batteries, the ventilation air flow must be recalculated.



METRIC	THIRD ANGLE PROJECTION		EATON CORPORATION		EATON	
DIMENSIONS ARE IN MILLIMETERS AFTER PLATING, DIMENSIONS AND TOLERANCES IN ACCORDANCE WITH ASME Y14.5M-1994. SEE NOTES FOR TOLERANCES.						
DESCRIPTION: Eaton 91PS 8-10 kW Dimensional Drawing						
ORIGINATED: MERON GEMEDA	04.05.2018	ECO:	NAME:	REVISION: 01	SIZE: A2	
MODIFIED:				STATE: RELEASED	SCALE: 1:7	
CHECKED:		DOCUMENT TYPE: AUTOCAD DRAWING	P-110000656		SHEET: 2 OF 10	
SAFETY:						
APPROVED:						
EATON CORPORATION - CONFIDENTIAL AND PROPRIETARY						
NOTICE TO PERSONS RECEIVING THIS DOCUMENT AND/OR TECHNICAL INFORMATION						
THIS DOCUMENT, INCLUDING THE DRAWING AND INFORMATION CONTAINED THEREON, IS CONFIDENTIAL AND IS THE EXCLUSIVE PROPERTY OF EATON CORPORATION AND IS LOANED TO YOU AND SUBJECT TO RECALL BY EATON AT ANY TIME. BY YOUR POSSESSION OF THIS DOCUMENT, YOU ACKNOWLEDGE AND AGREE THAT THIS DOCUMENT CANNOT BE USED IN ANY MANNER AVARICE TO THE INTERESTS OF EATON AND THAT NO PORTION OF THIS DOCUMENT MAY BE COPIED OR OTHERWISE REPRODUCED WITHOUT THE PRIOR WRITTEN CONSENT OF EATON. IN THE CASE OF CONFLICTING CONTRACTUAL PROVISIONS, THIS NOTICE SHALL GOVERN THE STATUS OF THIS DOCUMENT.						
© 2018 Eaton Corporation - All Rights Reserved						

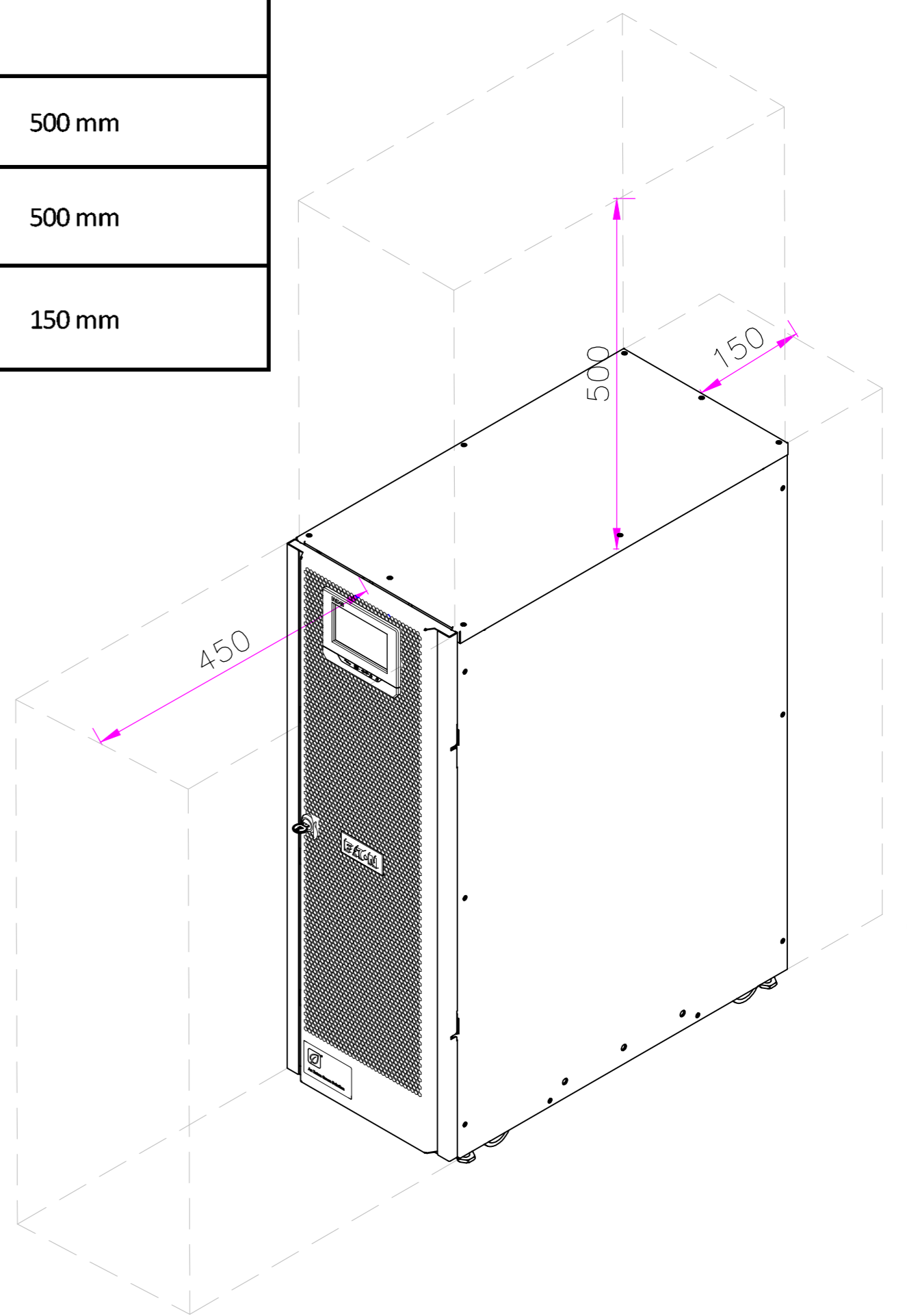
1 2 3 4 5 6 7 8 9 10 11 12 A2



COG(Center Of Gravity) Dimensions without Internal Batteries

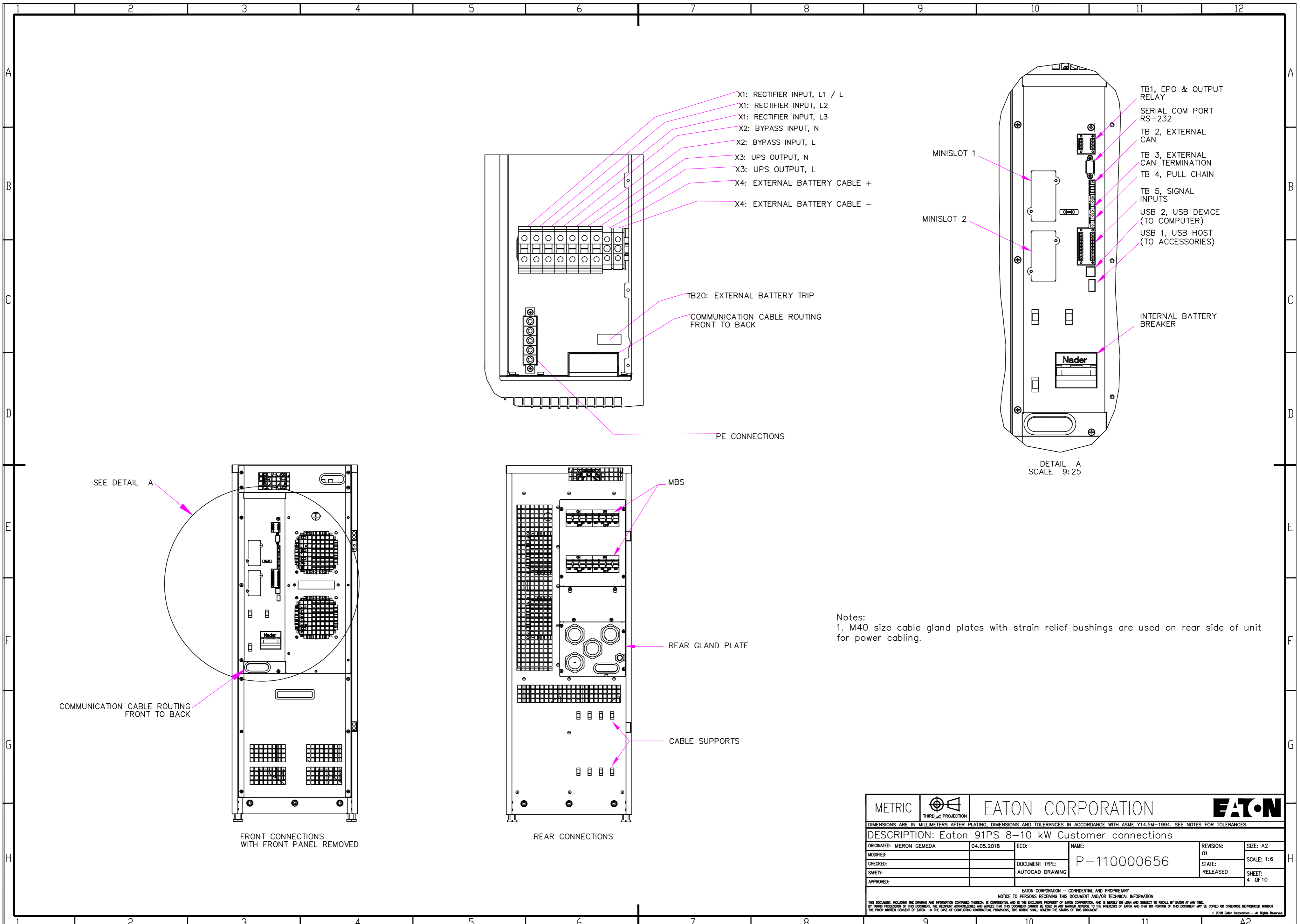
COG(Center Of Gravity) Dimensions with Internal Batteries

Clearances	
From Top of cabinet	500 mm
From Front of cabinet	500 mm
From Back of cabinet	150 mm



- Notes:
- The COG dimensions for UPS cabinet are approximated values including internal batteries and without batteries.
 - The COG dimensions of UPS cabinet without package are X=169 mm , Y=375 mm , Z=406 mm including batteries and X=174 mm , Y=345 mm , Z=625 mm without batteries.
 - Minimum overhead clearance above the UPS cabinet is 500mm (20 in) for servicing space.
 - Minimum 500 mm (20 in) clearance in front of the UPS cabinet is required for cooling air intake and servicing space.
 - Minimum 150 mm (6 in) clearance in back of the UPS cabinet is required for cooling air exhaust and servicing space.

METRIC		EATON CORPORATION		
DIMENSIONS ARE IN MILLIMETERS AFTER PLATING, DIMENSIONS AND TOLERANCES IN ACCORDANCE WITH ASME Y14.5M-1994. SEE NOTES FOR TOLERANCES.				
DESCRIPTION: Eaton 91PS 8-10 kW Clearance and COG				
ORIGINATED: MERON GEMEDA	4.05.2018	ECO:	NAME:	REVISION: 01
MODIFIED:		DOCUMENT TYPE:	P-110000656	SCALE: 1:7
CHECKED:		SAFETY:	RELEASED	SHEET: 3 OF 10
APPROVED:		EATON CORPORATION - CONFIDENTIAL AND PROPRIETARY		
NOTICE TO PERSONS RECEIVING THIS DOCUMENT AND/OR TECHNICAL INFORMATION				
THIS DOCUMENT, INCLUDING THE DRAWING AND INFORMATION CONTAINED THEREON, IS CONFIDENTIAL AND IS THE EXCLUSIVE PROPERTY OF EATON CORPORATION AND IS LOANED AND SUBJECT TO RECALL BY EATON AT ANY TIME. BY YOUR POSSESSION OF THIS DOCUMENT, YOU ARE ACKNOWLEDGING AND AGREEING THAT THIS DOCUMENT CANNOT BE USED IN ANY MANNER UNLESS TO THE INTERESTS OF EATON AND THAT NO PORTION OF THIS DOCUMENT MAY BE COPIED OR OTHERWISE REPRODUCED WITHOUT THE PRIOR WRITTEN CONSENT OF EATON. IN THE CASE OF CONFLICTING CONTRACTUAL PROVISIONS, THIS NOTICE SHALL GOVERN THE STATUS OF THIS DOCUMENT.				
				A2



- X1: RECTIFIER INPUT, L1 / L
- X1: RECTIFIER INPUT, L2
- X1: RECTIFIER INPUT, L3
- X2: BYPASS INPUT, N
- X2: BYPASS INPUT, L
- X3: UPS OUTPUT, N
- X3: UPS OUTPUT, L
- X4: EXTERNAL BATTERY CABLE +
- X4: EXTERNAL BATTERY CABLE -

- TB1, EPO & OUTPUT RELAY
- SERIAL COM PORT RS-232
- TB 2, EXTERNAL CAN
- TB 3, EXTERNAL CAN TERMINATION
- TB 4, PULL CHAIN
- TB 5, SIGNAL INPUTS
- USB 2, USB DEVICE (TO COMPUTER)
- USB 1, USB HOST (TO ACCESSORIES)

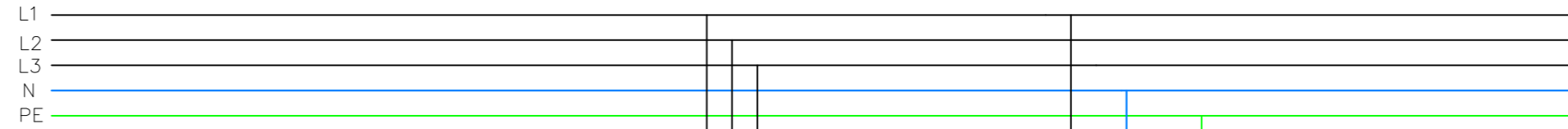
DETAIL A
SCALE 9:25

Notes:
1. M40 size cable gland plates with strain relief bushings are used on rear side of unit for power cabling.

METRIC		THIRD ANGLE PROJECTION		EATON CORPORATION			
DIMENSIONS ARE IN MILLIMETERS AFTER PLATING, DIMENSIONS AND TOLERANCES IN ACCORDANCE WITH ASME Y14.5M-1994. SEE NOTES FOR TOLERANCES.							
DESCRIPTION: Eaton 91PS 8-10 kW Customer connections							
ORIGINATED: MERON GEMEDA	04.05.2018	ECC:	NAME:	REVISION: 01	SIZE: A2		
MODIFIED:			DOCUMENT TYPE: P-110000656	STATE: RELEASED	SCALE: 1:6		
CHECKED:			AUTOCAD DRAWING		SHEET: 4	OF 10	
SAFETY:							
APPROVED:							

EATON CORPORATION - CONFIDENTIAL AND PROPRIETARY
NOTICE TO PERSONS RECEIVING THIS DOCUMENT AND/OR TECHNICAL INFORMATION
THIS DOCUMENT, INCLUDING THE DRAWING AND INFORMATION CONTAINED THEREON, IS CONFIDENTIAL AND IS THE EXCLUSIVE PROPERTY OF EATON CORPORATION AND IS LOANED TO YOU BY EATON AT ANY TIME. BY YOUR POSSESSION OF THIS DOCUMENT, YOU ACKNOWLEDGE AND AGREE THAT THIS DOCUMENT CANNOT BE USED IN ANY MANNER UNLESS TO THE INTERESTS OF EATON AND THAT NO PORTION OF THIS DOCUMENT MAY BE COPIED OR OTHERWISE REPRODUCED WITHOUT THE PRIOR WRITTEN CONSENT OF EATON. IN THE CASE OF CONFLICTING CONTRACTUAL PROVISIONS, THIS NOTICE SHALL GOVERN THE STATUS OF THIS DOCUMENT.
© 2018 Eaton Corporation - All Rights Reserved.

3:1 CONFIGURATION



X1

X2

RIS

BIS

K1

K5

MIS

MBP

Maintenance Bypass Switch

Internal Battery (Optional)

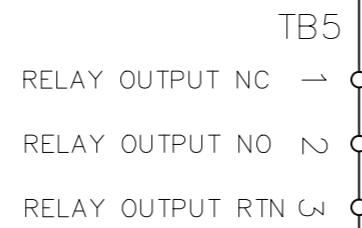
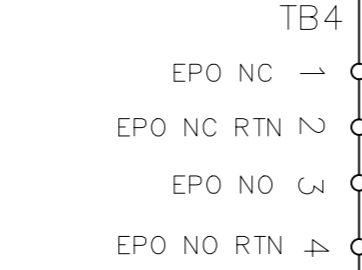
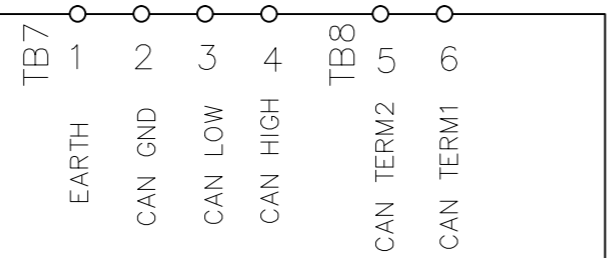
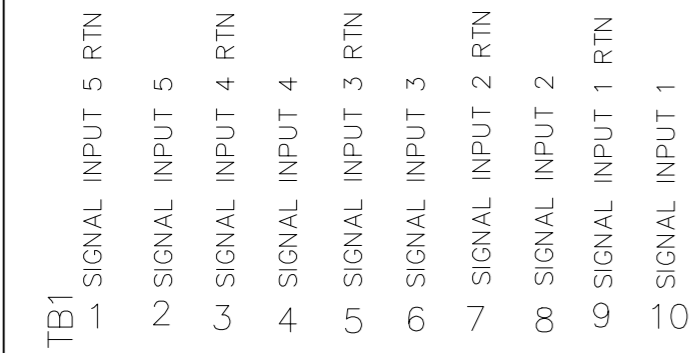
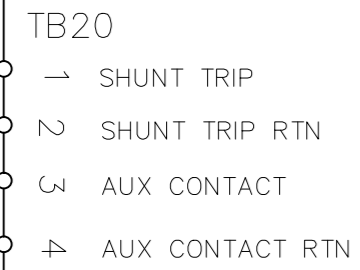
AC Output

X3

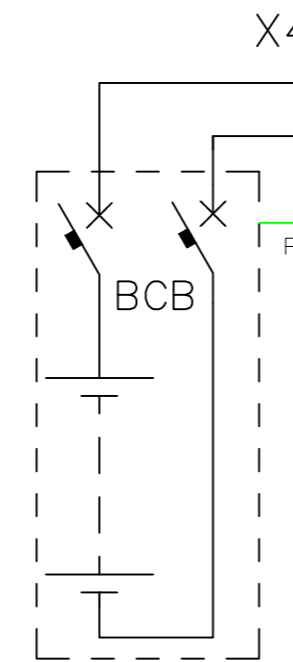
MOB

LOADS

91PS UPS



91PS UPS



X4

PE

Internal Battery (Optional)

AC Output

X3

MOB

LOADS

METRIC		EATON CORPORATION		EATON	
DIMENSIONS ARE IN MILLIMETERS AFTER PLATING, DIMENSIONS AND TOLERANCES IN ACCORDANCE WITH ASME Y14.5M-1994. SEE NOTES FOR TOLERANCES.					
DESCRIPTION: Eaton 91PS 8-10 kW Wiring a single unit(3:1) with MBS					
ORIGINATED: MERON GEMEDA	07.05.2018	ECO:	NAME:	REVISION: 01	SIZE: A2
MODIFIED:		DOCUMENT TYPE:	P-110000656	STATE: RELEASED	SCALE: 1:10
CHECKED:		APPROVED:			SHEET: 5 OF 10
SAFETY:					

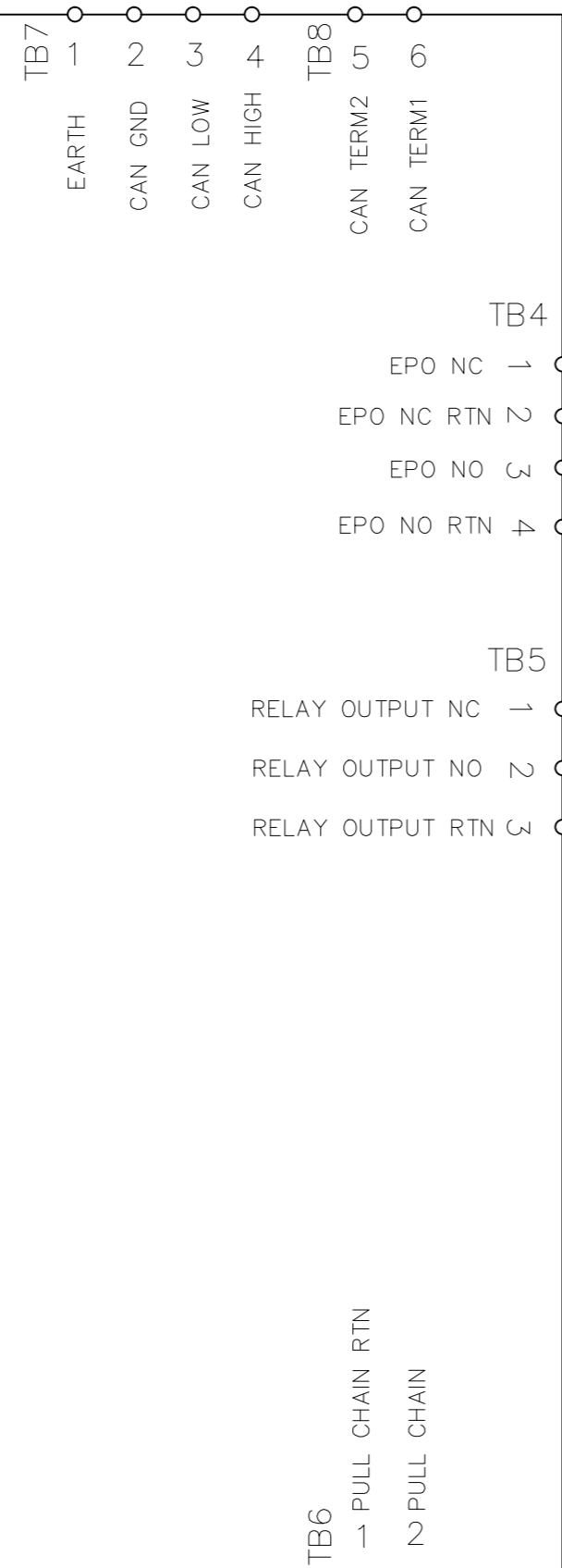
EATON CORPORATION - CONFIDENTIAL AND PROPRIETARY
 NOTICE TO PERSONS RECEIVING THIS DOCUMENT AND/OR TECHNICAL INFORMATION
 THIS DOCUMENT, INCLUDING THE DRAWING AND INFORMATION CONTAINED THEREON, IS CONFIDENTIAL AND IS THE EXCLUSIVE PROPERTY OF EATON CORPORATION AND IS LOANED AND SUBJECT TO RECALL BY EATON AT ANY TIME.
 BY THEIR POSSESSION OF THIS DOCUMENT, THE RECIPIENT ACKNOWLEDGES AND AGREES THAT THIS DOCUMENT CANNOT BE USED IN ANY MANNER, ADDRESS TO THE INTERESTS OF EATON AND THAT NO PORTION OF THIS DOCUMENT MAY BE COPIED OR OTHERWISE REPRODUCED WITHOUT THE PRIOR WRITTEN CONSENT OF EATON. IN THE CASE OF CONFLICTING CONTRACTUAL PROVISIONS, THIS NOTICE SHALL GOVERN THE STATUS OF THIS DOCUMENT.
 © 2018 Eaton Corporation - All Rights Reserved.

1:1 CONFIGURATION

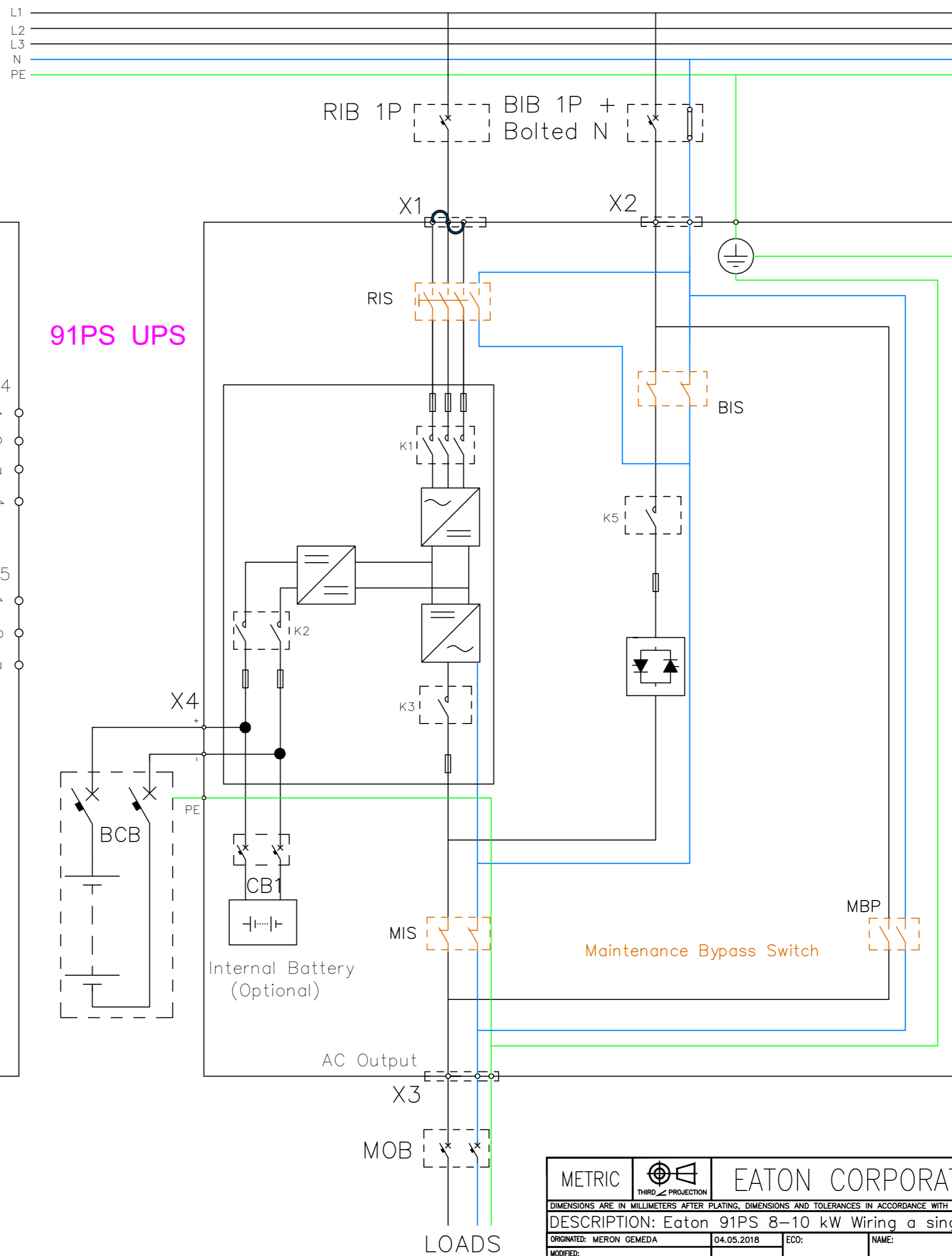
91PS UPS

- TB20
- SHUNT TRIP
 - ↺ SHUNT TRIP RTN
 - ↻ AUX CONTACT
 - ↻ AUX CONTACT RTN

- TB1
- 1 SIGNAL INPUT 5 RTN
 - 2 SIGNAL INPUT 5
 - 3 SIGNAL INPUT 4 RTN
 - 4 SIGNAL INPUT 4
 - 5 SIGNAL INPUT 3 RTN
 - 6 SIGNAL INPUT 3
 - 7 SIGNAL INPUT 2 RTN
 - 8 SIGNAL INPUT 2
 - 9 SIGNAL INPUT 1 RTN
 - 10 SIGNAL INPUT 1



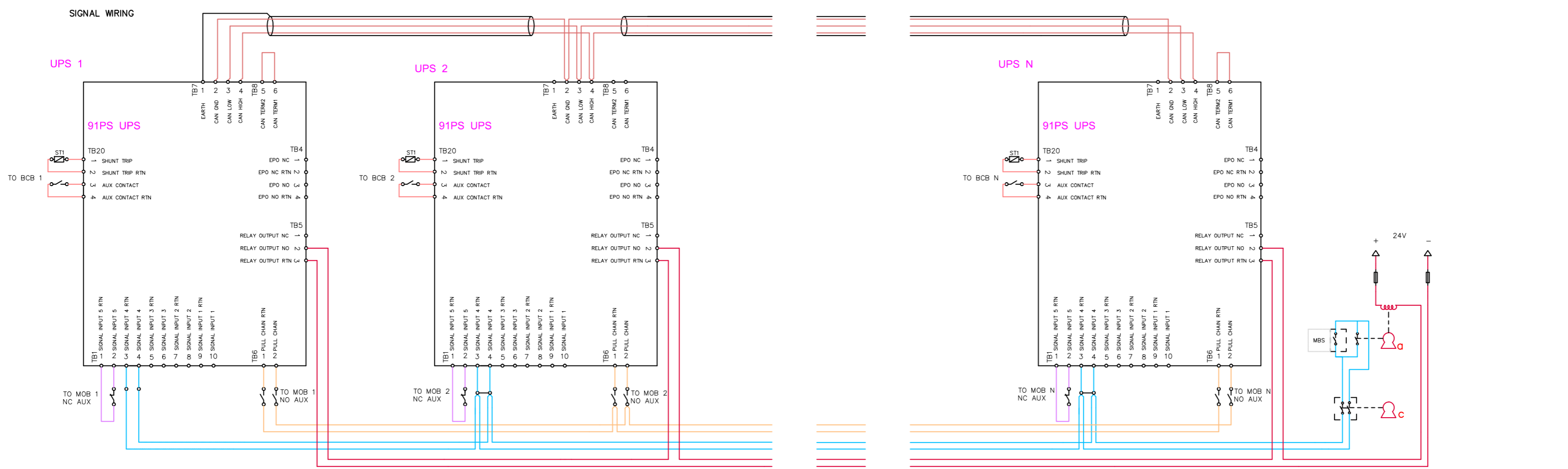
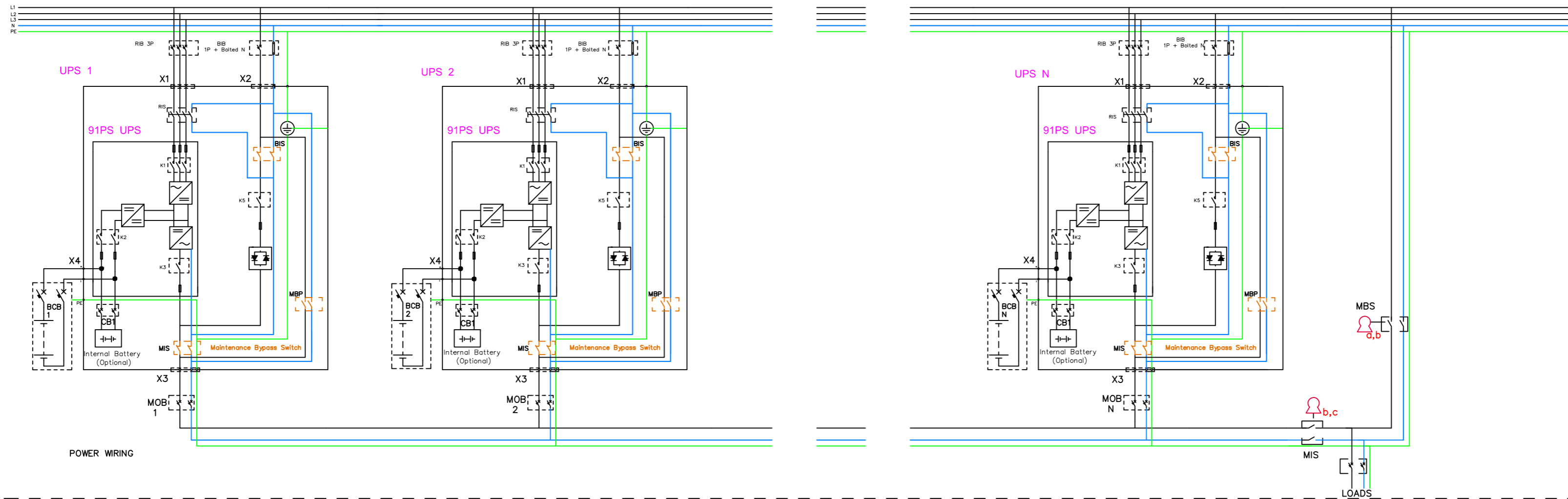
91PS UPS



METRIC		EATON CORPORATION			
DIMENSIONS ARE IN MILLIMETERS AFTER PLATING, DIMENSIONS AND TOLERANCES IN ACCORDANCE WITH ASME Y14.5M-1994. SEE NOTES FOR TOLERANCES.					
DESCRIPTION: Eaton 91PS 8-10 kW Wiring a single unit(1:1) with MBS					
ORIGINATED: MERON GEMEDA	04.05.2018	ECCO:	NAME:	REVISION: 01	SIZE: A2
MODIFIED:				STATE: RELEASED	SCALE: 1:10
CHECKED:		DOCUMENT TYPE:	P-110000656		SHEET: 6 OF 10
SAFETY:		AUTOCAD DRAWING			
APPROVED:		EATON CORPORATION - CONFIDENTIAL AND PROPRIETARY			

NOTICE TO PERSONS RECEIVING THIS DOCUMENT AND/OR TECHNICAL INFORMATION: THIS DOCUMENT, INCLUDING THE DRAWING AND INFORMATION CONTAINED THEREON, IS CONFIDENTIAL AND IS THE EXCLUSIVE PROPERTY OF EATON CORPORATION AND IS LOANED OR SUBJECT TO RENTAL BY EATON AT ANY TIME. BY YOUR POSSESSION OF THIS DOCUMENT, THE RECEIPT ACKNOWLEDGES AND AGREES THAT THIS DOCUMENT CANNOT BE USED IN ANY MANNER, AND THAT NO PORTION OF THIS DOCUMENT MAY BE COPIED OR OTHERWISE REPRODUCED WITHOUT THE PRIOR WRITTEN CONSENT OF EATON. IN THE CASE OF CONFLICTING CONTRACTUAL PROVISIONS, THIS NOTICE SHALL GOVERN THE STATUS OF THIS DOCUMENT.

3:1 CONFIGURATION



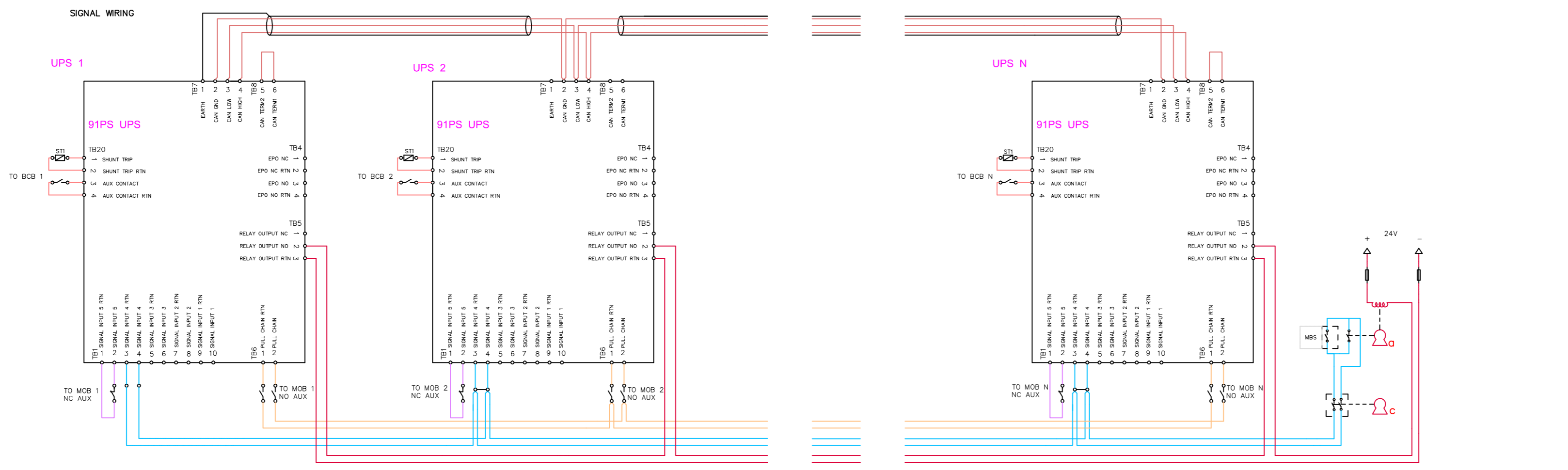
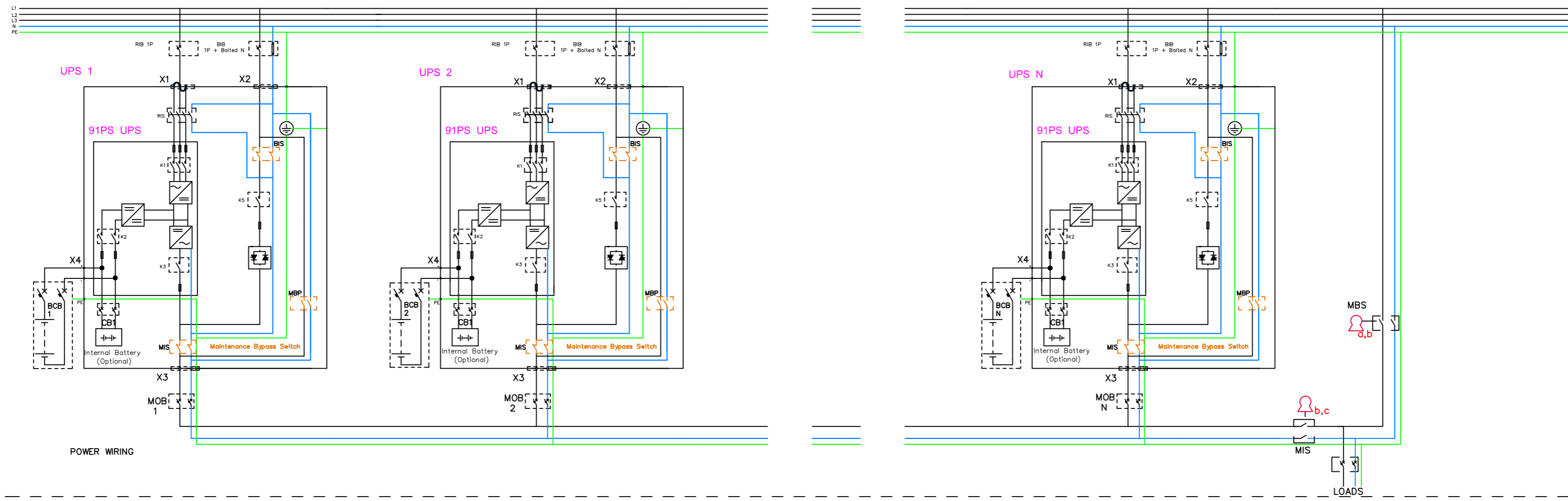
- Notes:
- The single unit internal MBS functionality shall not be used when the units are in parallel. Use the external MBS for the system instead.

- MBS STATUS (Provided by others, Installed by others)
0.75 - 2.5mm² twisted pair (if possible, else shielded)
No earth needed
- PULL CHAIN (REDUNDANT ON BYP STATUS)
Provided by Eaton, Installed by Eaton
- MOB STATUS (Provided by others, Installed by others)
0.75 - 2.5mm² twisted pair (if possible, else shielded)
No earth needed
- ON BYPASS STATUS (NO INVERTORS ONLINE)
1.5 - 2.5mm², provided by others, Installed by others
- PCAN (DUAL AS OPTION)
Provided by Eaton, Installed by Eaton

- Mechanical bypass interlocking sequence
- Place UPS system to bypass. On bypass status (K3) will energize Key A solenoid to release it
 - Removing key A will switch on "force bypass" to the UPS system
 - Place key A to MBS breaker and close breaker. Key B will be released.
 - Aux contact of MBS will keep "force bypass" on UPS system
 - Place key B to MIS breaker and open MIS to isolate UPS system from load. Key C will be released
 - Place key C to it's dedicated keyhole to release "force bypass" command to allow UPS system testing

METRIC		EATON CORPORATION			
DIMENSIONS ARE IN MILLIMETERS AFTER PLATING, DIMENSIONS AND TOLERANCES IN ACCORDANCE WITH ASME Y14.5M-1994. SEE NOTES FOR TOLERANCES.					
DESCRIPTION: Eaton 91PS 8-10 kW Wiring Parallel Units (3:1)					
ORIGINATED: MERON GEMEDA	04.05.2018	ECC:	NAME:	REVISION: 01	SIZE: A2
MODIFIED:		DOCUMENT TYPE:	P-110000656		SCALE: N/A
CHECKED:		AUTOCAD DRAWING	STATE:	RELEASED	SHEET: 7 OF 10
SAFETY:					
APPROVED:					
EATON CORPORATION - CONFIDENTIAL AND PROPRIETARY					
NOTICE TO PERSONS RECEIVING THIS DOCUMENT AND/OR TECHNICAL INFORMATION					
THIS DOCUMENT, INCLUDING THE DRAWING AND INFORMATION CONTAINED THEREON, IS CONFIDENTIAL AND IS THE EXCLUSIVE PROPERTY OF EATON CORPORATION AND IS LOANED TO YOU AND SUBJECT TO RECALL BY EATON AT ANY TIME. BY YOUR POSSESSION OF THIS DOCUMENT, YOU ACKNOWLEDGE AND AGREE THAT THIS DOCUMENT CANNOT BE USED IN ANY MANNER UNLESS TO THE INTERESTS OF EATON AND THAT NO PORTION OF THIS DOCUMENT MAY BE COPIED OR OTHERWISE REPRODUCED WITHOUT THE PRIOR WRITTEN CONSENT OF EATON. IN THE CASE OF CONFLICTING CONTRACTUAL PROVISIONS, THIS NOTICE SHALL GOVERN THE STATUS OF THIS DOCUMENT.					
© 2018 Eaton Corporation - All Rights Reserved.					

1:1 CONFIGURATION



- Notes:
- The single unit internal MBS functionality shall not be used when the units are in parallel. Use the external MBS for the system instead.

- █ MBS STATUS (Provided by others, Installed by others)
0.75 - 2.5mm² twisted pair (if possible, else shielded)
No earth needed
- █ PULL CHAIN (REDUNDANT ON BYP STATUS)
Provided by Eaton, Installed by Eaton
- █ MOB STATUS (Provided by others, Installed by others)
0.75 - 2.5mm² twisted pair (if possible, else shielded)
No earth needed
- █ ON BYPASS STATUS (NO INVERTORS ONLINE)
1.5 - 2.5mm², provided by others, Installed by others
- █ PCAN (DUAL AS OPTION)
Provided by Eaton, Installed by Eaton

- Mechanical bypass interlocking sequence
- Place UPS system to bypass. On bypass status (K3) will energize Key A solenoid to release it
 - Removing key A will switch on "force bypass" to the UPS system
 - Place key A to MBS breaker and close breaker. Key B will be released.
 - Aux contact of MBS will keep "force bypass" on UPS system
 - Place key B to MIS breaker and open MIS to isolate UPS system from load. Key C will be released
 - Place key C to it's dedicated keyhole to release "force bypass" command to allow UPS system testing

METRIC		EATON CORPORATION		EATON	
DIMENSIONS ARE IN MILLIMETERS AFTER PLATING, DIMENSIONS AND TOLERANCES IN ACCORDANCE WITH ASME Y14.5M-1994. SEE NOTES FOR TOLERANCES.					
DESCRIPTION: Eaton 91PS 8-10 kW Wiring Parallel Units (1:1)					
ORIGINATED: MERON GEMEDA	04.05.2018	ECC:	NAME:	REVISION: 01	SIZE: A2
MODIFIED:				STATE:	SCALE: N/A
CHECKED:		DOCUMENT TYPE:	P-110000656	RELEASED	SHEET: 8 OF 10
SAFETY:		AUTOCAD DRAWING			
APPROVED:					
EATON CORPORATION - CONFIDENTIAL AND PROPRIETARY					
NOTICE TO PERSONS RECEIVING THIS DOCUMENT AND/OR TECHNICAL INFORMATION					
THIS DOCUMENT, INCLUDING THE DRAWING AND INFORMATION CONTAINED THEREON, IS CONFIDENTIAL AND IS THE EXCLUSIVE PROPERTY OF EATON CORPORATION AND IS LOANED OR SUBJECT TO RECALL BY EATON AT ANY TIME. BY YOUR POSSESSION OF THIS DOCUMENT, THE RECIPIENT ACKNOWLEDGES AND AGREES THAT THIS DOCUMENT CANNOT BE USED IN ANY MANNER UNLESS TO THE INTERESTS OF EATON AND THAT NO PORTION OF THIS DOCUMENT MAY BE COPIED OR OTHERWISE REPRODUCED WITHOUT THE PRIOR WRITTEN CONSENT OF EATON. IN THE CASE OF CONFLICTING CONTRACTUAL PROVISIONS, THIS NOTICE SHALL GOVERN THE STATUS OF THIS DOCUMENT.					
© 2018 Eaton Corporation - All Rights Reserved					

Eaton 91PS 8-10 kW (3:1) UPS Site Planning Data

Product Specifications																				
UPS Rating		Rectifier AC Input	3P Rectifier Input Breaker (RIB)		Bypass AC Input	1P+Bolted N Bypass Input Breaker (BIB)			AC Output	2P Inverter AC output Breaker MOB			Battery Breaker (BCB) (Ratings at the end of discharge, 1.67 V/cell)				For Single Unit Maintenance Bypass Switch (MBS)	For Parallel Units Common Maintenance Bypass Switch (MBS)		
			Nominal Current	Maximum Current		Nominal Current at 230V Input	Maximum Current at 15% under voltage	Integrated Bypass Fuse		Output Current	Inverter Short Circuit Current	Auxiliary Switches	Rating	Separate Battery Configuration (UPM Bttery)	Common Battery Configuration (UPS Battery)	Trip Device (Shunt Trip)	Auxiliary Switches	Rating	Rating	Auxiliary Switches
kVA	kW	V	A	A	V	A	A	Type	V	A	A / 300 ms	Qty	VDC	A	A	VDC	Qty	A	A	Qty
8	8	400	12	14	230	35	41	3 x 80ET (parallel)	230	36	156	2	500	NA	32	24	1	36	36 x N	1
10	10	400	15	18	230	43	51	3 x 80ET (parallel)	230	45	156	2	500	NA	32	24	1	45	45 x N	1

Minimum recommended cable and fuse sizes								
UPS RATING kW	Rectifier cable [mm ²]	Rectifier Fuse [A]	Bypass, output cable [mm ²]	Bypass Fuse [A]	PE Cable [mm ²]	POS. & NEG. Line [mm ²]	Battery Fuse [A]	EXT BATT PE Cable [mm ²]
8	2,5	16	10	50	10	10	32	10
10	4	20	16	63	16	10	32	10

Maximum conductor cross section	
Rectifier/Bypass/Output	EXT. Battery
Solid/stranded wire: 50 mm ² Stranded wire with ferrule: 35 mm ²	Solid/stranded wire: 25 mm ² Stranded wire with ferrule: 16 mm ²

Notes:

1. Rectifier AC input current calculations: Nominal – 100% load without charging; Maximum – 100% load with maximum charging (Rectifier current limit).
2. Inverter AC output current calculation: At 100% rated output load.
3. The system must be installed on a level floor suitable for computer or electronic equipment.
4. All wiring and installations must be in accordance with applicable National and Local Electric Regulations.
5. Rectifier AC input to UPS: (3) phases and (1) ground.
Bypass AC input to UPS: (1) phase, (1) neutral, (1) ground.
AC output to load: (1) phase, (1) neutral, (1) ground.
DC input from battery to UPS: (1) positive, (1) negative, (1) ground.
6. All breakers should be adjusted according to the specified Ampere values to protect the UPS and installation.
7. Cable sizing is based on the standard IEC 60364-5-52 and IEC 60364-5-54. The sizing is for 70°C rated copper cables.
8. Specifications are subject to change.

METRIC		EATON CORPORATION		
DIMENSIONS ARE IN MILLIMETERS AFTER PLATING, DIMENSIONS AND TOLERANCES IN ACCORDANCE WITH ASME Y14.5M-1994. SEE NOTES FOR TOLERANCES.				
DESCRIPTION: Eaton 91PS 8-10 kW Specifications(3:1)				
ORIGINATED: MERON GEMEDA	04.05.2018	ECO:	NAME:	REVISION: 01
MODIFIED:		DOCUMENT TYPE:	P-110000656	SCALE: N/A
CHECKED:		SAFETY:	RELEASED	SHEET: 9 OF 10
APPROVED:				

EATON CORPORATION – CONFIDENTIAL AND PROPRIETARY
 NOTICE TO PERSONS RECEIVING THIS DOCUMENT AND/OR TECHNICAL INFORMATION
 THIS DOCUMENT, INCLUDING THE DRAWING AND INFORMATION CONTAINED THEREON, IS CONFIDENTIAL AND IS THE EXCLUSIVE PROPERTY OF EATON CORPORATION AND IS LOANED TO YOU AND SUBJECT TO RECALL BY EATON AT ANY TIME.
 BY YOUR POSSESSION OF THIS DOCUMENT, YOU ACKNOWLEDGE AND AGREE THAT THIS DOCUMENT CANNOT BE USED IN ANY MANNER UNLESS TO THE INTERESTS OF EATON AND THAT NO PORTION OF THIS DOCUMENT MAY BE COPIED OR OTHERWISE REPRODUCED WITHOUT THE PRIOR WRITTEN CONSENT OF EATON. IN THE CASE OF CONFLICTING CONTRACTUAL PROVISIONS, THIS NOTICE SHALL GOVERN THE STATUS OF THIS DOCUMENT.
 © 2018 Eaton Corporation – All Rights Reserved.

Eaton 91PS 8-10 kW (1:1) UPS Site Planning Data

Product Specifications																				
UPS Rating		Rectifier AC Input	1P Rectifier Input Breaker (RIB)		Bypass AC Input	1P+Bolted N Bypass Input Breaker (BIB)			AC Output	2P Inverter AC output Breaker MOB			Battery Breaker (BCB) (Ratings at the end of discharge, 1.67 V/cell)				For Single Unit Maintenance Bypass Switch (MBS)	For Parallel Units Common Maintenance Bypass Switch (MBS)		
			Nominal Current	Maximum Current		Nominal Current at 230 V Input	Maximum Current at 15% under voltage	Integrated Bypass Fuse		Output Current	Inverter Short Circuit Current	Auxiliary Switches	Rating	Separate Battery Configuration (UPM Bttery)	Common Battery Configuration (UPS Battery)	Trip Device (Shunt Trip)	Auxiliary Switches	Rating	Rating	Auxiliary Switches
kVA	kW	V	A	A	V	A	A	Type	V	A	A / 300ms	Qty	VDC	A	A	VDC	Qty	A	A	Qty
8	8	230	37	44	230	35	41	3 x 80ET (parallel)	230	36	109	2	500	NA	32	24	1	36	36 x N	1
10	10	230	46	55	230	43	51	3 x 80ET (parallel)	230	45	109	2	500	NA	32	24	1	45	45 x N	1

Minimum recommended cable and fuse sizes								
UPS RATING kW	Rectifier cable [mm ²]	Rectifier Fuse [A]	Bypass, output cable [mm ²]	Bypass Fuse [A]	PE Cable [mm ²]	POS. & NEG. Line [mm ²]	Battery Fuse [A]	EXT BATT PE Cable [mm ²]
8	10	50	10	50	10	10	32	10
10	16	63	16	63	16	10	32	10

Maximum conductor cross section	
Rectifier/Bypass/Output	EXT. Battery
Solid/stranded wire: 50 mm ² Stranded wire with ferrule: 35 mm ²	Solid/stranded wire: 25 mm ² Stranded wire with ferrule: 16 mm ²

Notes:

1. Rectifier AC input current calculations: Nominal – 100% load without charging; Maximum – 100% load with maximum charging (Rectifier current limit).
2. Inverter AC output current calculation: At 100% rated output load.
3. The system must be installed on a level floor suitable for computer or electronic equipment.
4. All wiring and installations must be in accordance with applicable National and Local Electric Regulations.
5. Rectifier AC input to UPS: (1) phase and (1) ground.
Bypass AC input to UPS: (1) phase, (1) neutral, (1) ground.
AC output to load: (1) phase, (1) neutral, (1) ground.
DC input from battery to UPS: (1) positive, (1) negative, (1) ground.
6. All breakers should be adjusted according to the specified Ampere values to protect the UPS and installation.
7. For UPS installation that utilizes single feed input, The input breaker should be configured according to the rated rectifier input current.
8. Cable sizing is based on the standard IEC 60364-5-52 and IEC 60364-5-54. The sizing is for 70°C rated copper cables.
9. Specifications are subject to change.

METRIC		EATON CORPORATION	
DIMENSIONS ARE IN MILLIMETERS AFTER PLATING, DIMENSIONS AND TOLERANCES IN ACCORDANCE WITH ASME Y14.5M-1994. SEE NOTES FOR TOLERANCES.			
DESCRIPTION: Eaton 91PS 8-10 kW Specifications(3:1)			
ORIGINATED: MERON GEMEDA	04.05.2018	ECO:	NAME:
MODIFIED:		DOCUMENT TYPE:	P-110000656
CHECKED:		SAFETY:	STATE: RELEASED
APPROVED:		REVISION:	01
		SCALE:	N/A
		SHEET:	10 OF 10

EATON CORPORATION – CONFIDENTIAL AND PROPRIETARY
 NOTICE TO PERSONS RECEIVING THIS DOCUMENT AND/OR TECHNICAL INFORMATION
 THIS DOCUMENT, INCLUDING THE DRAWING AND INFORMATION CONTAINED THEREON, IS CONFIDENTIAL AND IS THE EXCLUSIVE PROPERTY OF EATON CORPORATION AND IS LOANED TO YOU AND SUBJECT TO RECALL BY EATON AT ANY TIME.
 BY YOUR POSSESSION OF THIS DOCUMENT, YOU ACKNOWLEDGE AND AGREE THAT THIS DOCUMENT CANNOT BE USED IN ANY MANNER UNLESS TO THE INTERESTS OF EATON AND THAT NO PORTION OF THIS DOCUMENT MAY BE COPIED OR OTHERWISE REPRODUCED WITHOUT THE PRIOR WRITTEN CONSENT OF EATON. IN THE CASE OF CONFLICTING CONTRACTUAL PROVISIONS, THIS NOTICE SHALL GOVERN THE STATUS OF THIS DOCUMENT.
 © 2018 Eaton Corporation – All Rights Reserved.