

Eaton 5SC Short Depth Rack UPS

1500VA Datasheet



Short depth format for easy integration in small cabinets

Affordable protection for servers and networking systems

Manageability

- The LCD interface provides clear status of the UPS key parameters such as input and output voltage, load and battery level, and estimated runtime. Essential configuration capabilities are also offered for output voltage, audible alarm and sensitivity.
- The 5SC offers USB and serial connectivity. USB port is HID compliant for automatic integration into Windows, Mac OS and Linux.
- A slot for an optional communication card (including SNMP/ Web card or relay contact card) is available on rack and R/T models. Eaton's Intelligent Power® Software Suite insures compatibility with all major OS including virtualization software.

Reliability

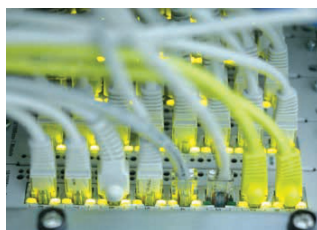
- Pure sinewave output: When operating in battery mode the 5SC provides a high quality output signal for any sensitive equipment connected, such as active PFC (power factor corrected) servers.
- Buck and Boost operation corrects a wide range of input voltage variations through continuous regulation, without the use of batteries.
- Stronger, longer battery life: Eaton ABM® battery management technology uses an innovative three-stage charging system that extends battery life by up to 50%.

Flexibility

- Designed to fit into short depth wall enclosures down to 500mm, 2 post racks or to be wall mounted.
- Rail kits and ANZ Input cord are included as standard.
- Easy battery replacement from front panel to extend UPS life.

Ideal for protecting:

- Rack or Tower servers
- NAS, Network equipments
- ATMs, Ticket machines, Kiosks



Eaton 5SC

1500VA



- 1 LCD interface
- 2 Panel for batteries replacement
- 3 USB port + Serial port
- 4 8 IEC 10A
- 5 Communication card slot
- 6 ROO/RPO terminal

Technical Specifications

Rating (VA/W)	1500VA/1050W
Format	Rack 2U
Electrical characteristics	
Technology	Line interactive High Frequency (Sinewave, Booster, Fader)
Input voltage range without using batteries	184 to 276 V
Output voltage and frequency	230V (-10/+6 %) (Adjustable to 220/230/240 V), 50/60 Hz \pm 1Hz (Autosensing)
Connections	
Input	1 IEC C14 (10A)
Outputs for Rack or R/T models	8 IEC C13 (10A)
Batteries	
Typical backup times @50 and 70% load*	13/8
Battery management	ABM, automatic battery test, deep discharge protection
Communication	
Communication ports	1 USB port + RS232 serial port (USB and RS232 cannot be used simultaneously) ROO/RPO + card slot for Network-M2 card or Relay-MS card
Operating conditions, standards and approvals	
Operating temperature	0 to 40°C
Noise level	<45dB
Safety	IEC/EN 62040-1, UL1778
EMC	IEC/EN 62040-2
Approvals	CE /CB report (TUV), cTUVus ,RCM
Dimensions H x W x D in mm/ Weight	
Dimensions	86.2 x 440 x 405 mm
Weight	17.8kg
Customer service and support	
Warranty	2 years

* Runtimes are shown @ 0.7 power factor. Backup duration is approximate and may vary with equipment, configuration, battery age, temperature, etc. In the interests of continuous product improvement all specifications are subject to change without notice.



1300 662 435
poweronaustralia.com.au

Power On Australia Pty Ltd - ABN 48 110 752 442

📍 Unit 2/121 Evans Road SALISBURY QLD 4107 (Head Office)

📦 Po Box 5322, Daisy Hill QLD 4127